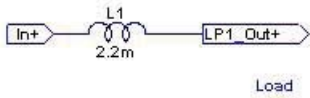


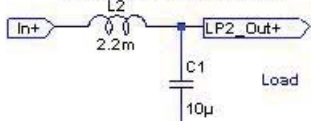
# Catalog of Passive Filters

## Standard lowpass filters

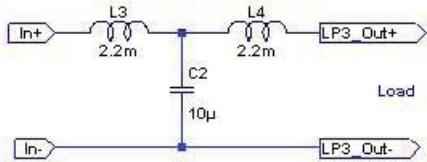
First-order lowpass (LP1)



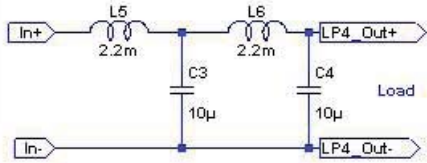
Second-order lowpass (LP2)



Third-order lowpass (LP3)

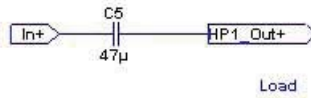


Fourth-order lowpass (LP4)

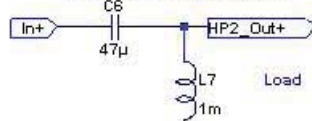


## Standard highpass filters

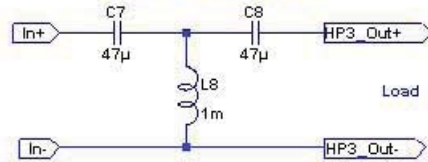
First-order highpass (HP1)



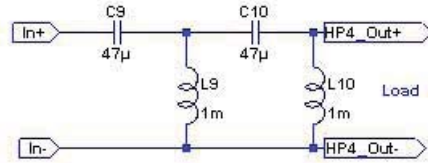
Second-order highpass (HP2)



Third-order highpass (HP3)

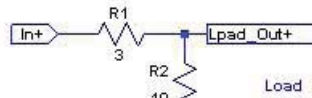


Fourth-order highpass (HP4)

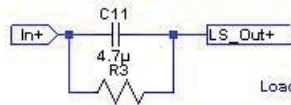


## Other useful filters

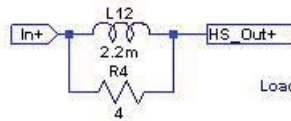
L-Pad (Reduces output by constant factor)



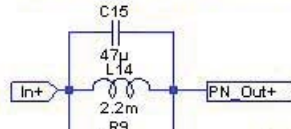
Low-cut shelf filter (for tweeter EQ)



High-cut shelf filter (Baffle step compensation)

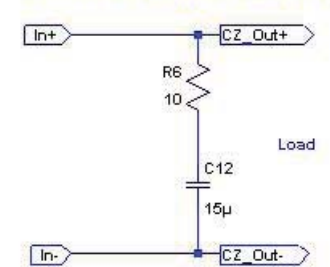


Parallel notch filter (dip at resonance)

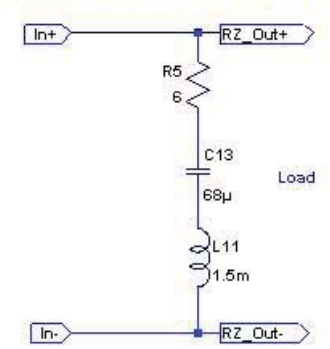


## Zobel (impedance compensation) filters

Conjugate zobel (flattens out inductive rise)



Resonant zobel (flattens out low-end impedance peak)



MIT OpenCourseWare  
<http://ocw.mit.edu>

Audio and Speaker Electronics  
Spring 2007

For information about citing these materials or our Terms of Use, visit: <http://ocw.mit.edu/terms>.