

retail

green spaces and recreation

commercial office space

universities and student uses

**four dragons**

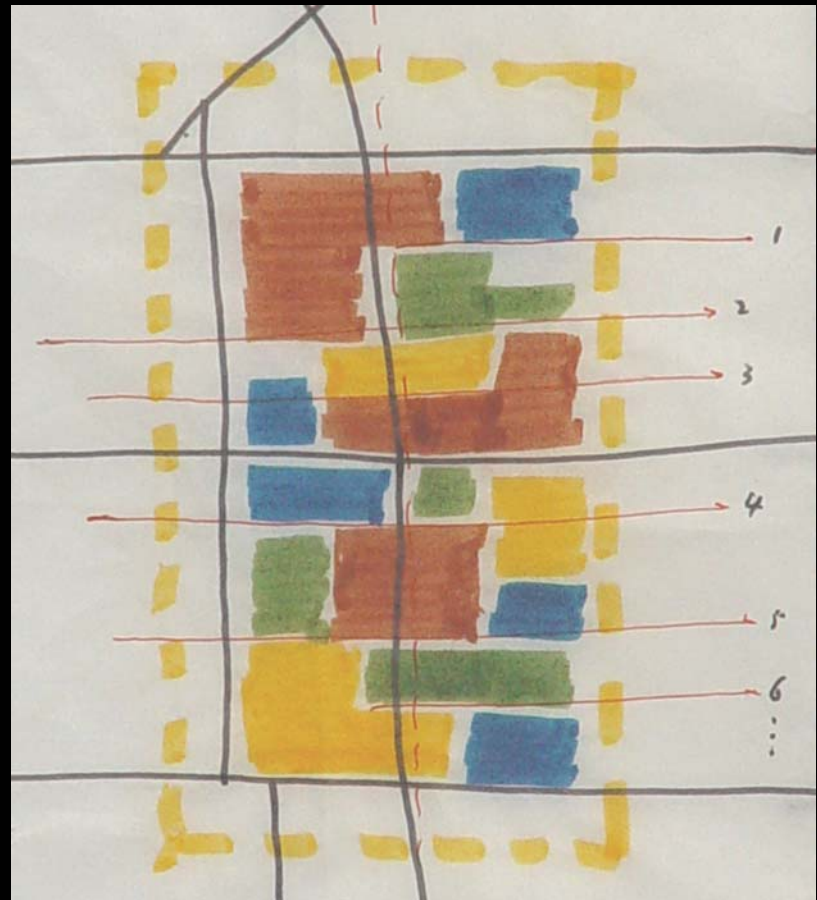
Group 1: Pang Cong, Zhou Yu, Ginger Nolan, Susanne Seitingner, Susana Williams

Beijing Studio 2004

**mixed-use housing areas:**

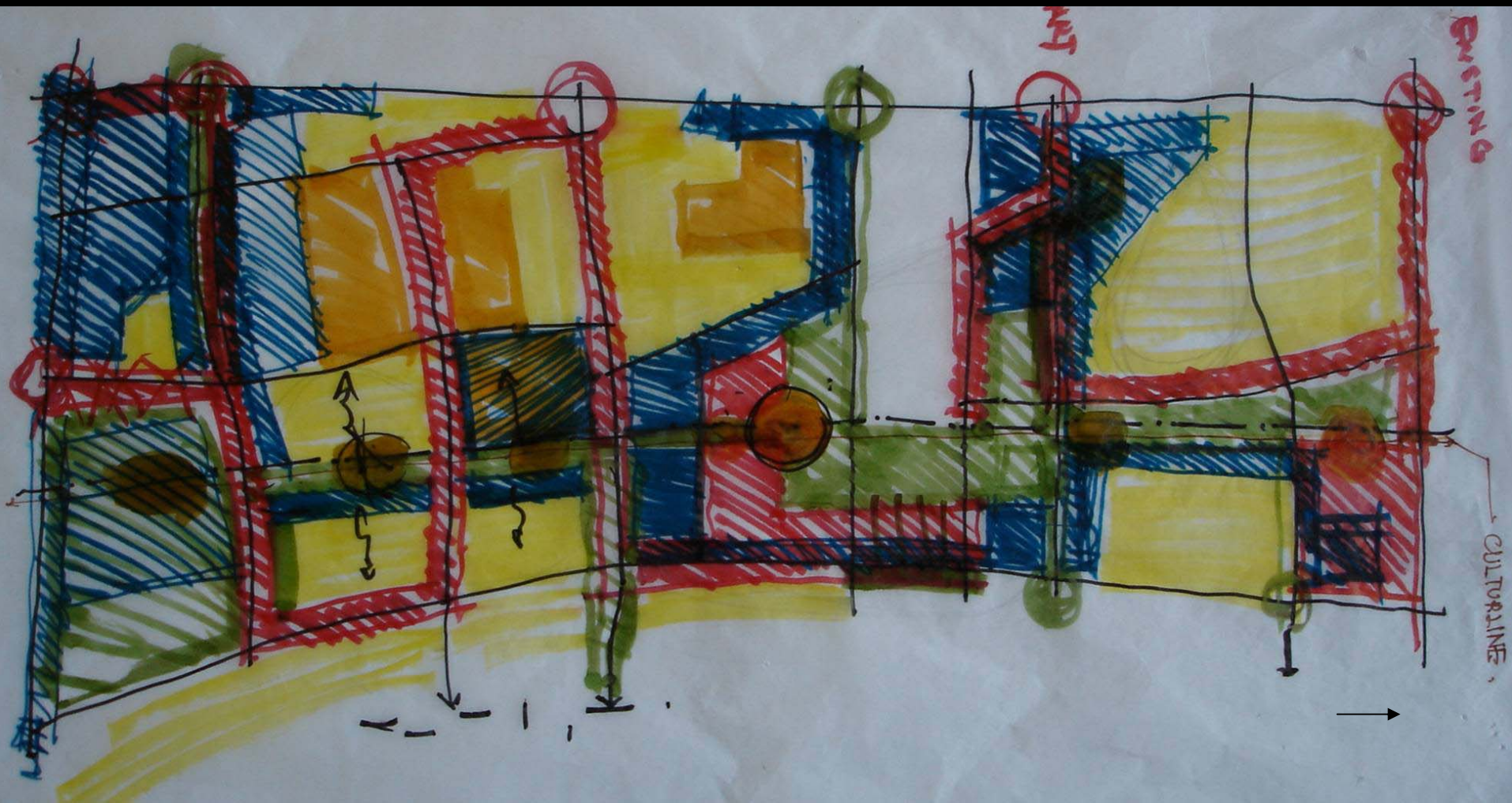
**accommodating different live-work scenarios**

**embracing areas**





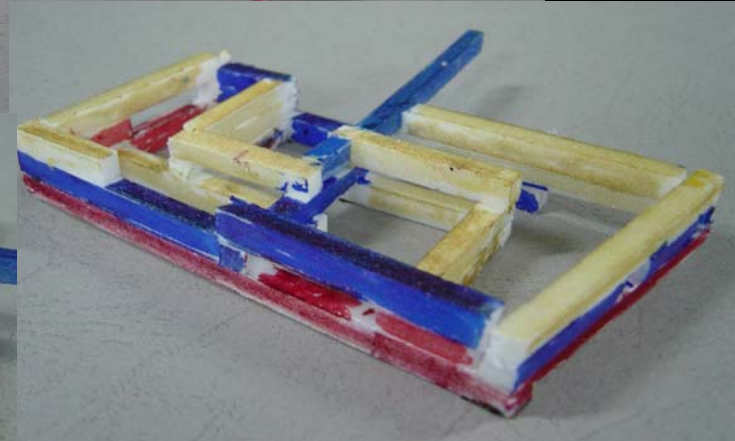
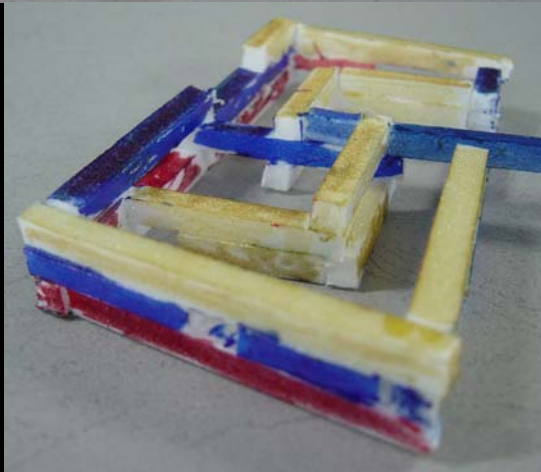
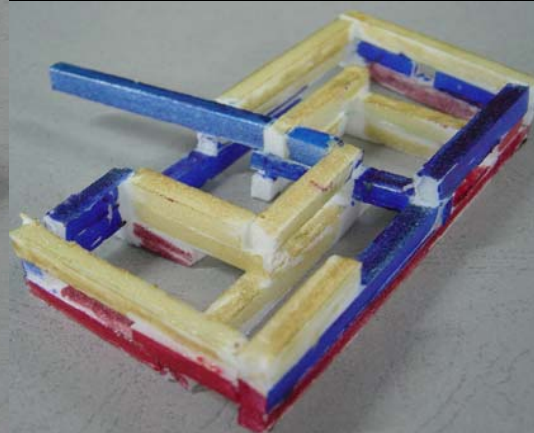
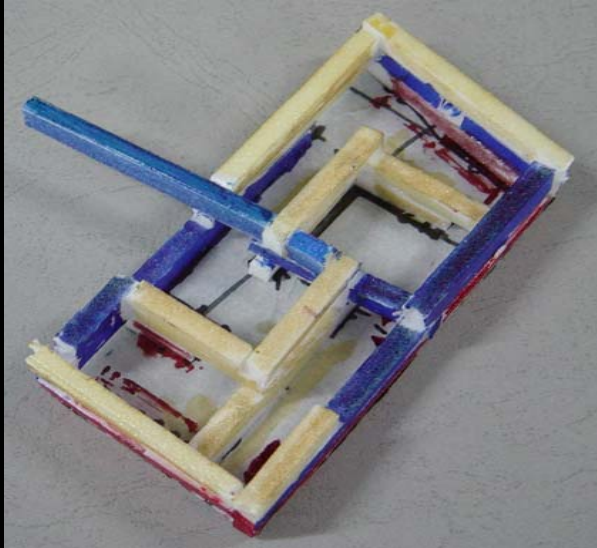
**merging uses through linear interventions**



final concept for uses and interventions



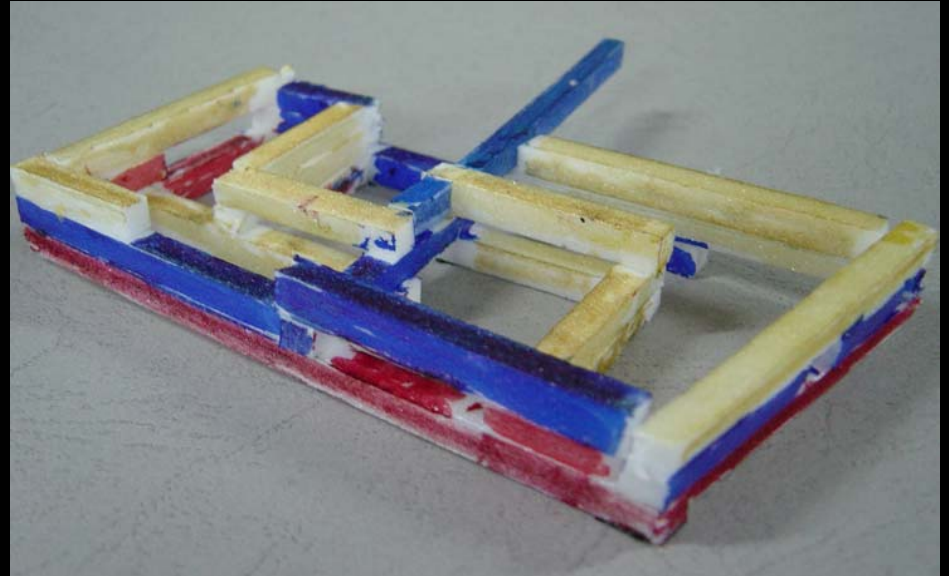
**mixing uses**



**developing a fabric - mixing uses through the courtyard typology**

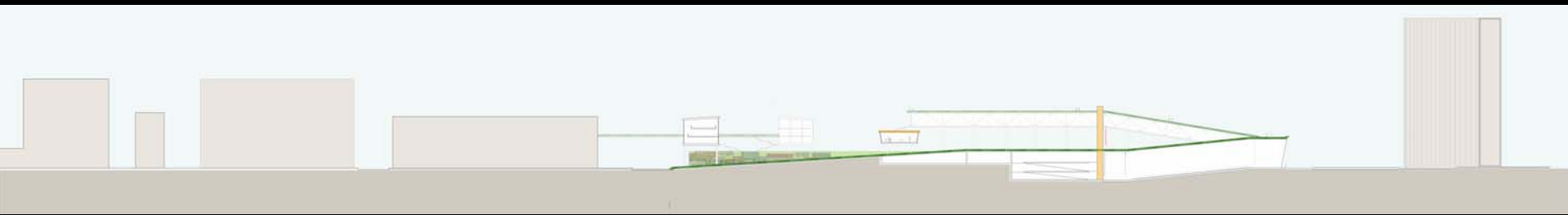


**study of urban fabric**

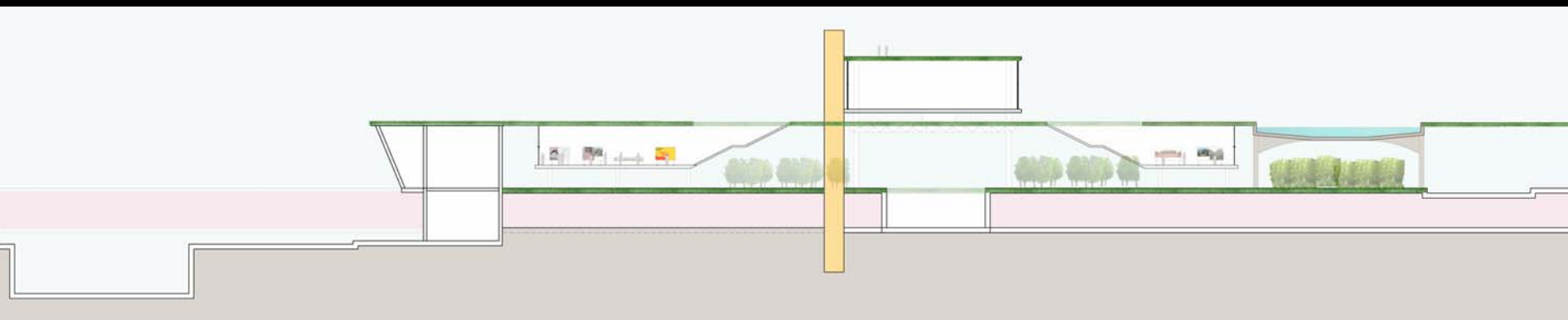


**detail area - mixed-use transit station on zhi chun road**





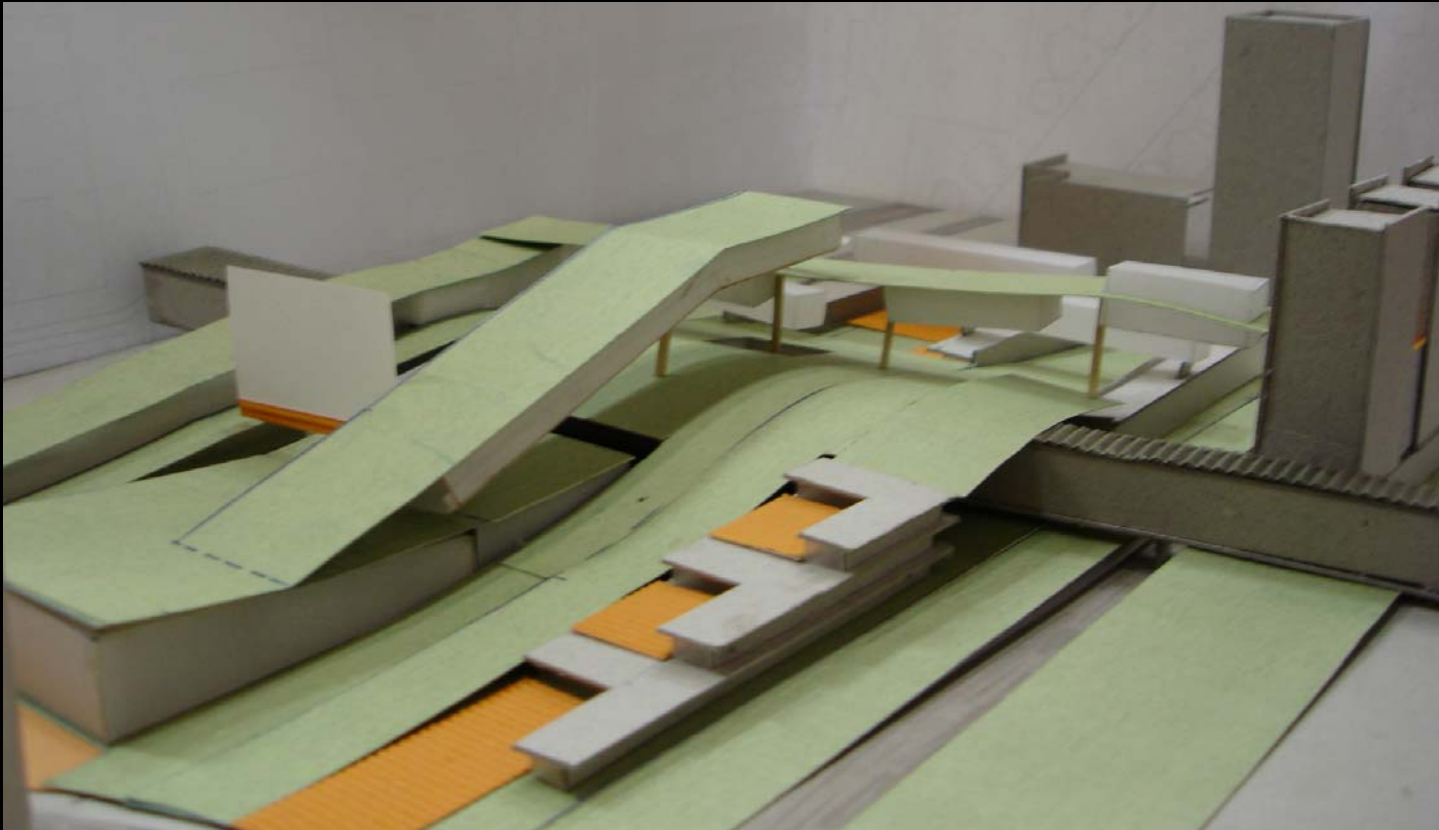
**section through cinema with gym and sports facilities behind**



**section through cinema with gym and sports facilities behind**



model



model