

MIT OpenCourseWare  
<http://ocw.mit.edu>

11.307 Beijing Urban Design Studio  
Summer 2008

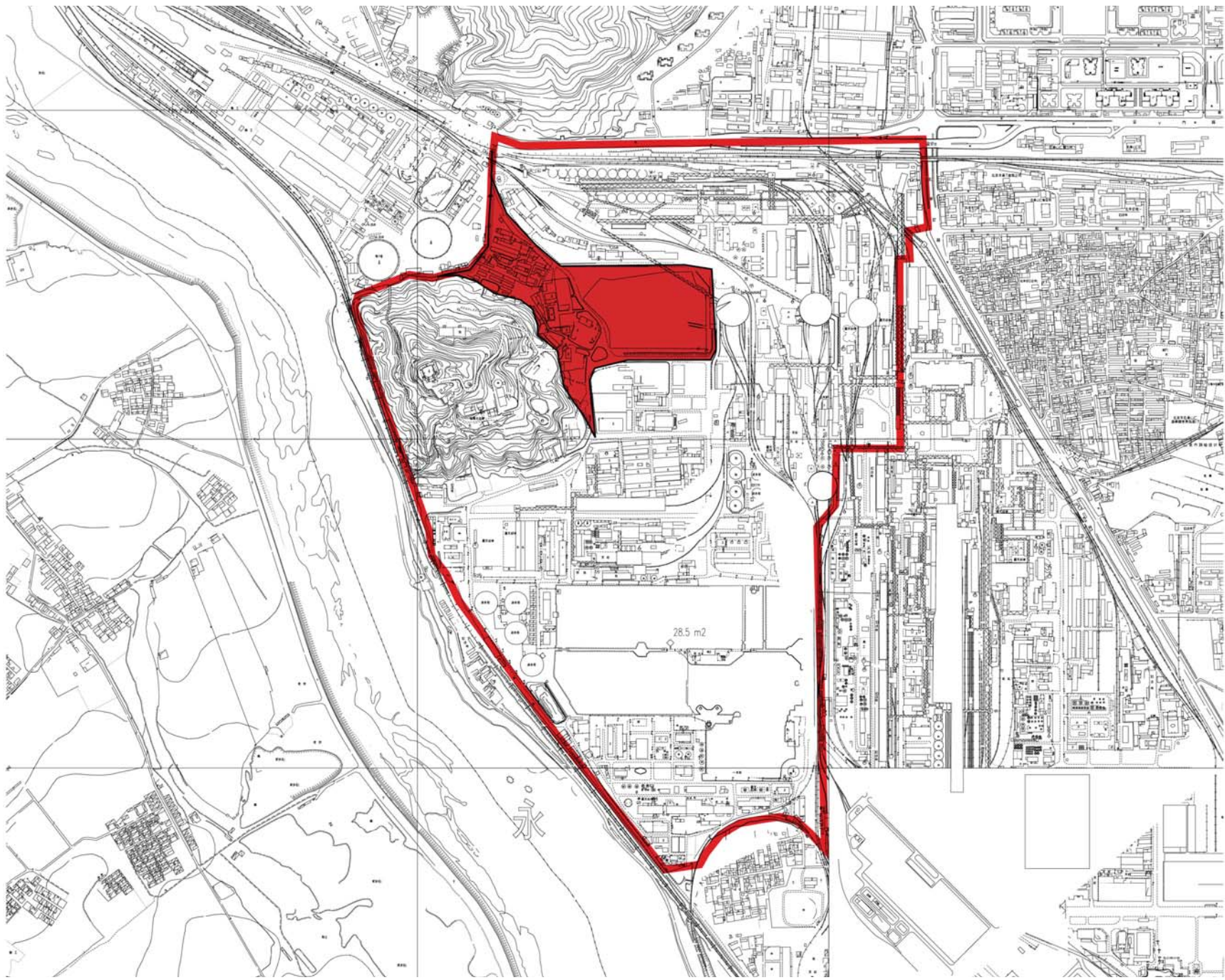
For information about citing these materials or our Terms of Use, visit: <http://ocw.mit.edu/terms>.

# MERGING ADJACENCIES

11.307 Beijing Urban Design Studio 2008

**Team V.** Sandra Frem . Deborah Morris . Pamela Ritchot . Sara Zeng . Colin Zhao

**June 20, 2008**



## **1 Introduction**

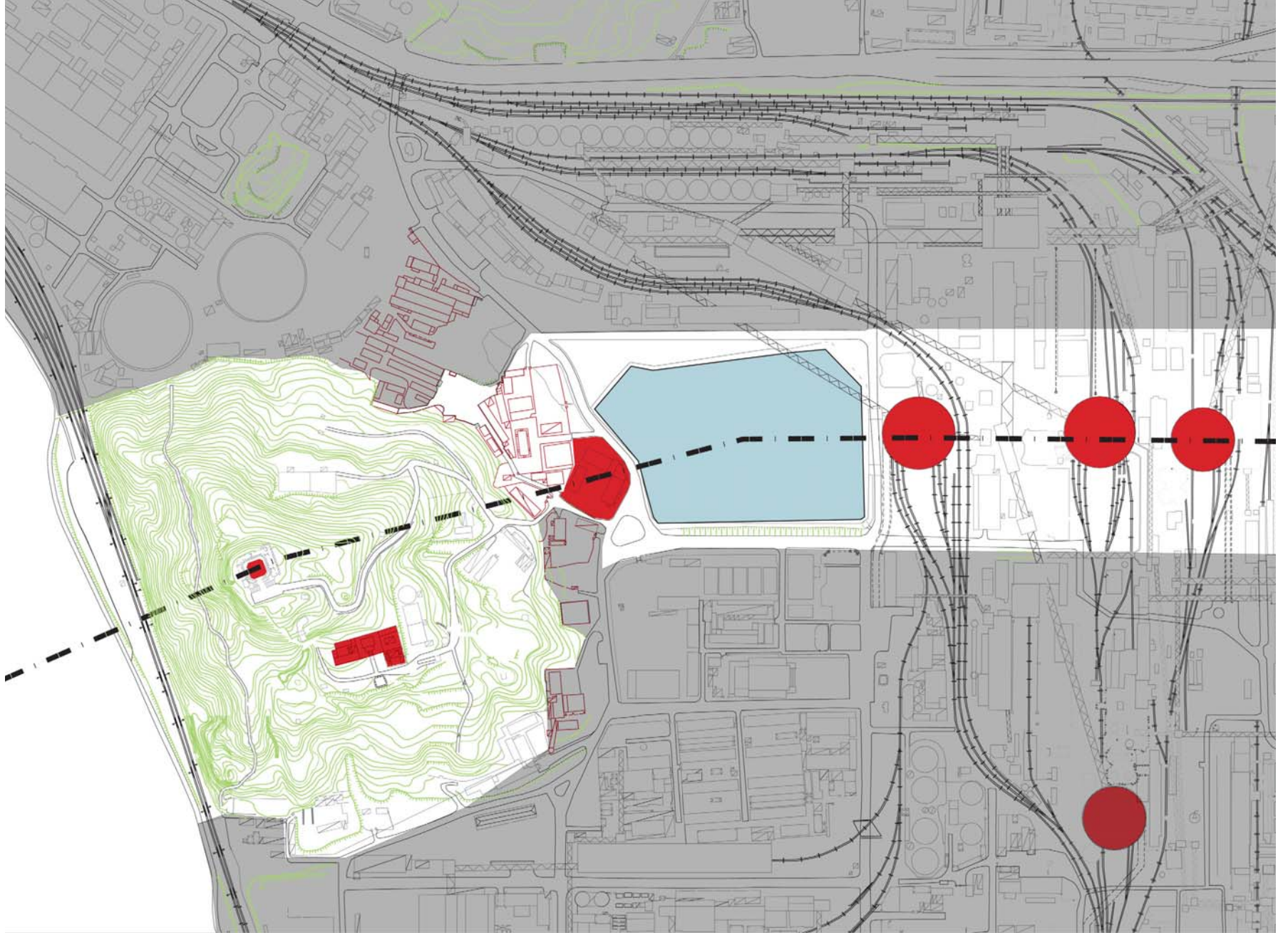
The historical and natural landscape of the Little Hot Lake makes it the literal and figurative heart of Shougang. It is a valuable and powerful asset in any redevelopment vision.

Redevelopment plans should maintain the significant industrial infrastructure, preserve the area as a place of convergence, and promote the natural landscape.

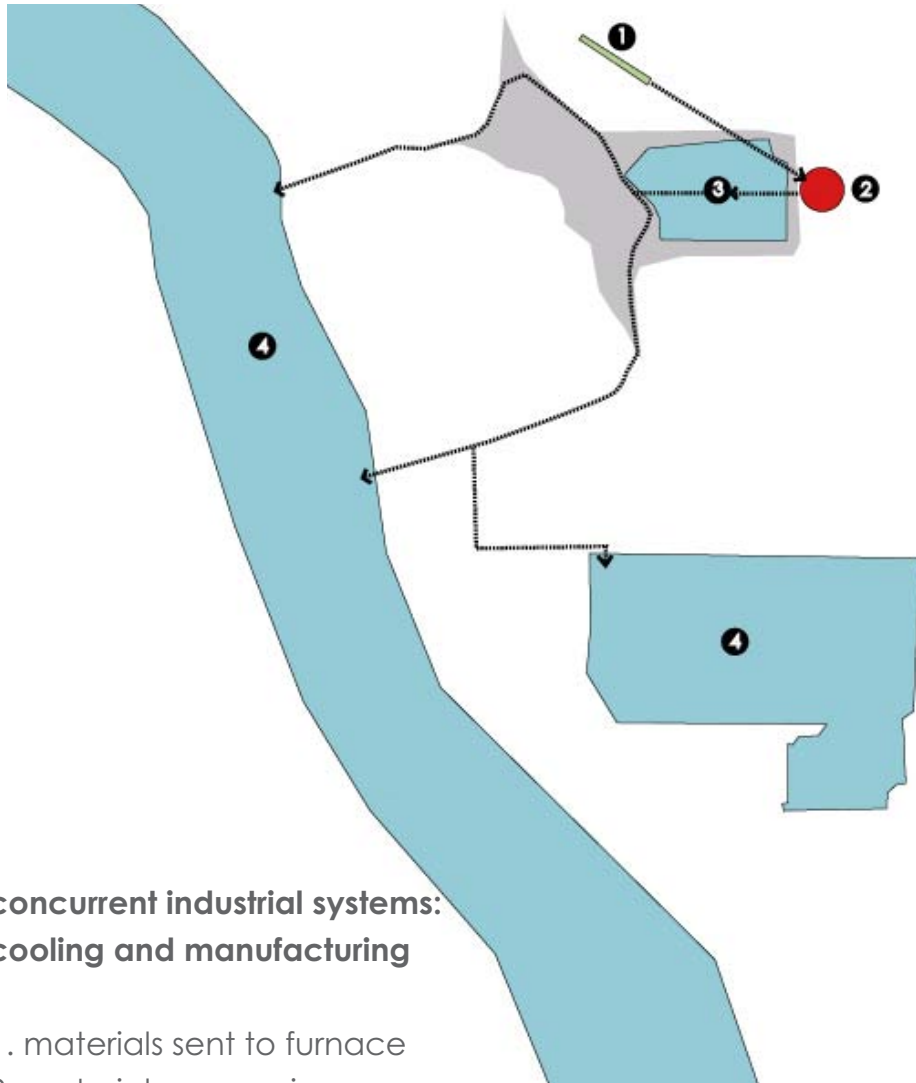




## Strategic Location



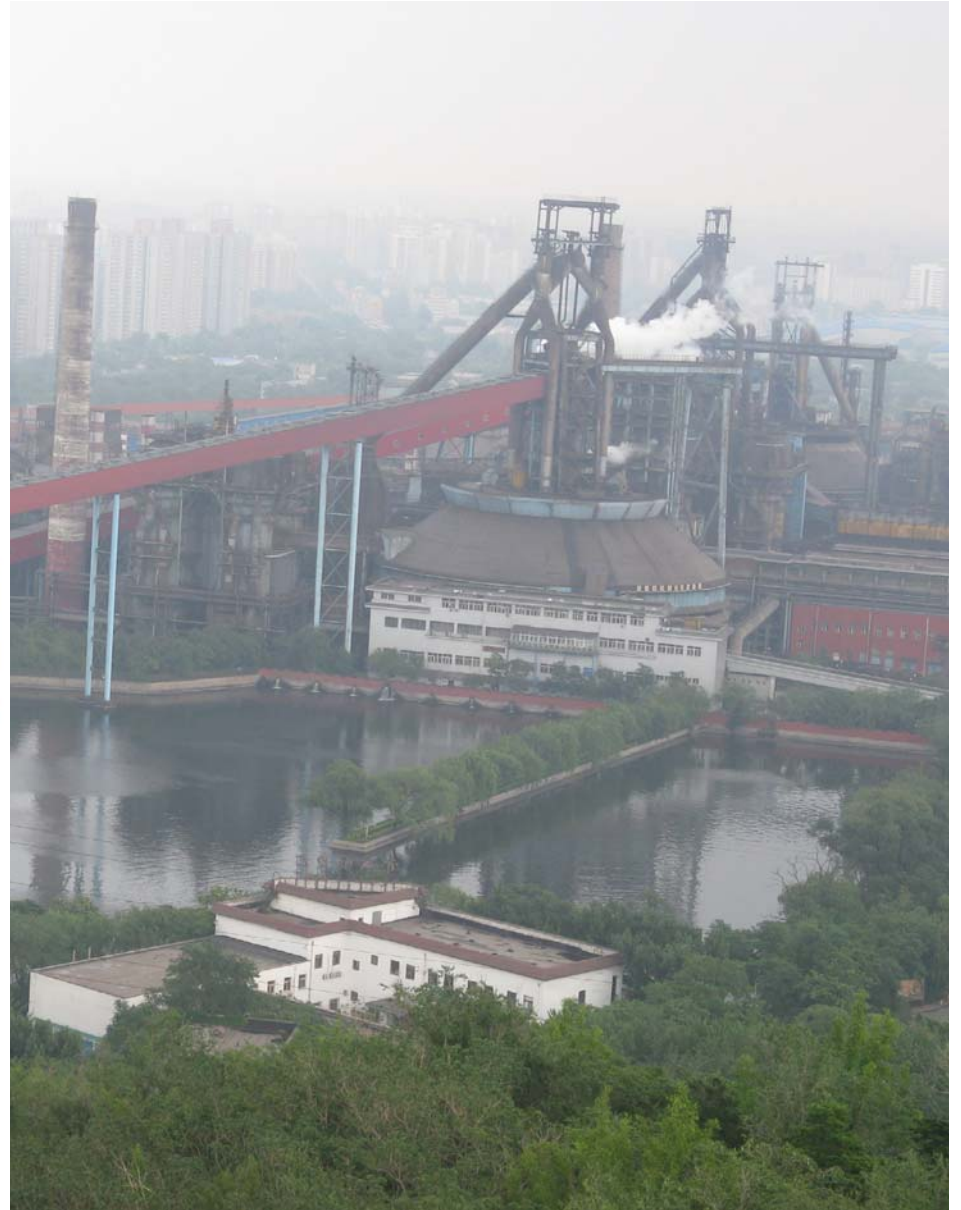




**concurrent industrial systems:  
cooling and manufacturing**

- 1. materials sent to furnace
- 2. materials processing
- 3. Cooling
- 3. Water management

Existing Functions



# Existing Conditions

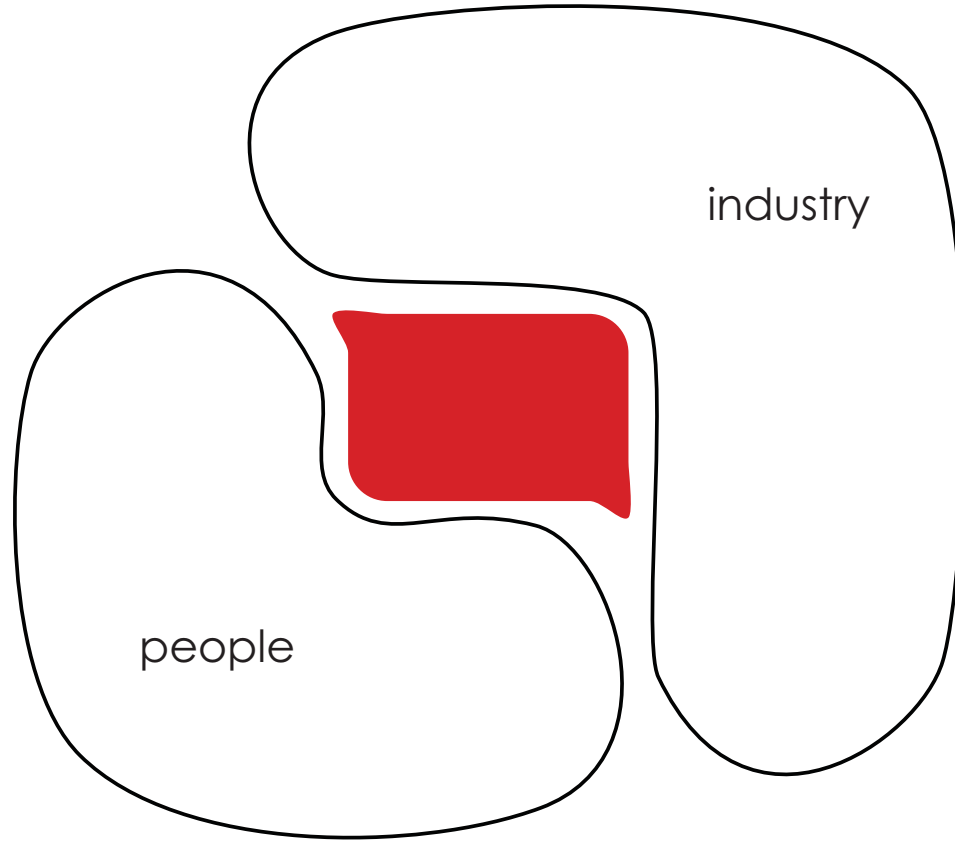


## **2 Adjacencies**

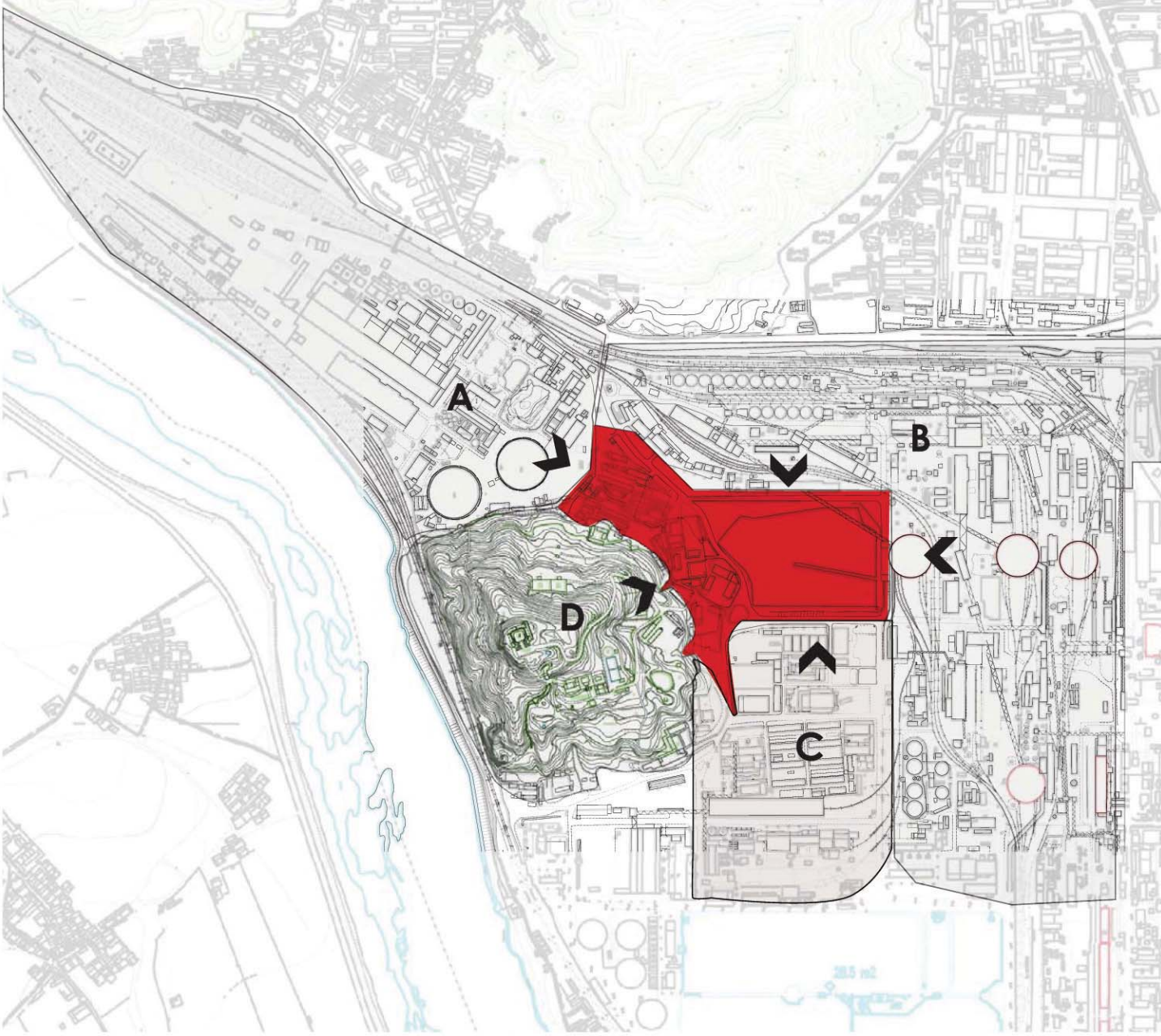




# Neighborhood Scale Adjacencies



## Neighborhood Scale Adjacencies





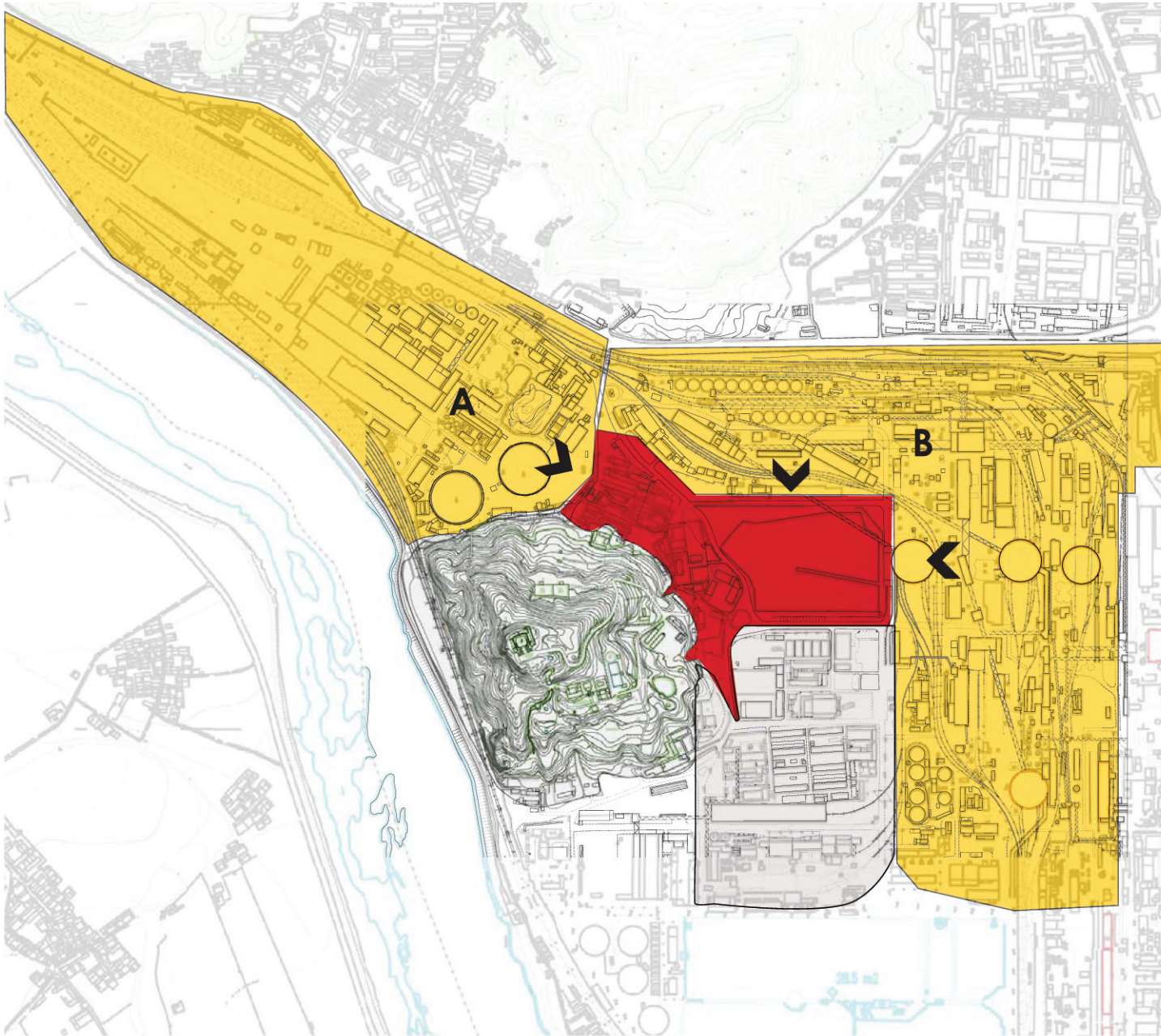
## Neighborhood Scale Adjacencies





## Neighborhood Scale Adjacencies

### Industrial Zone



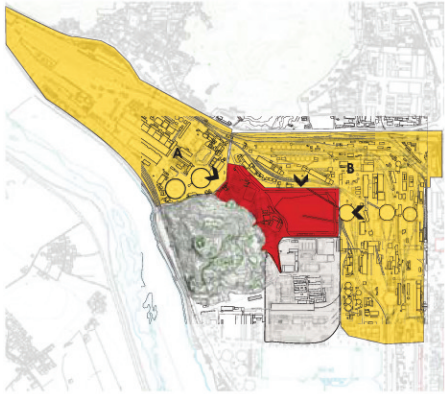
#### **Zone A**

Current & Future Power Generation, Recreation, and Water Management.

#### **Zone B**

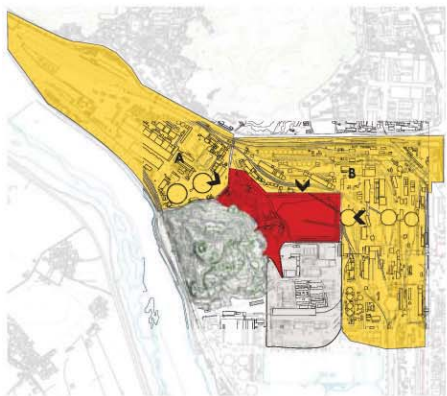
Toxic site  
currently 70000 workers  
65000 workers to remain  
Obsolete industrial facilities  
Complex fabric of rails and ramps to move goods and raw materials  
Dominant physical presence  
Large scale





## Neighborhood Scale Adjacencies Industrial Zone



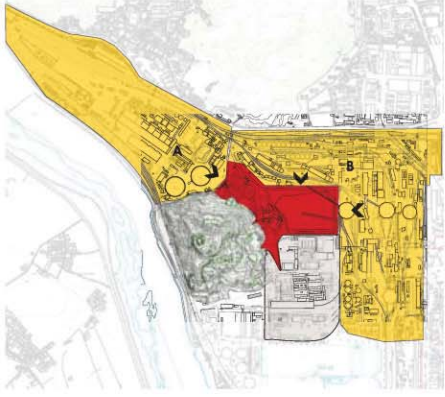


# Neighborhood Scale Adjacencies

## Industrial Zone



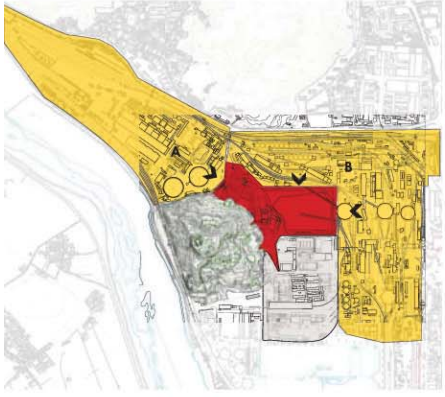




## Neighborhood Scale Adjacencies

### Industrial Zone

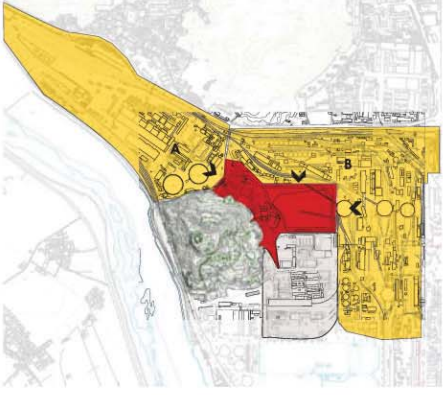




Neighborhood Scale Adjacencies

Industrial Zone



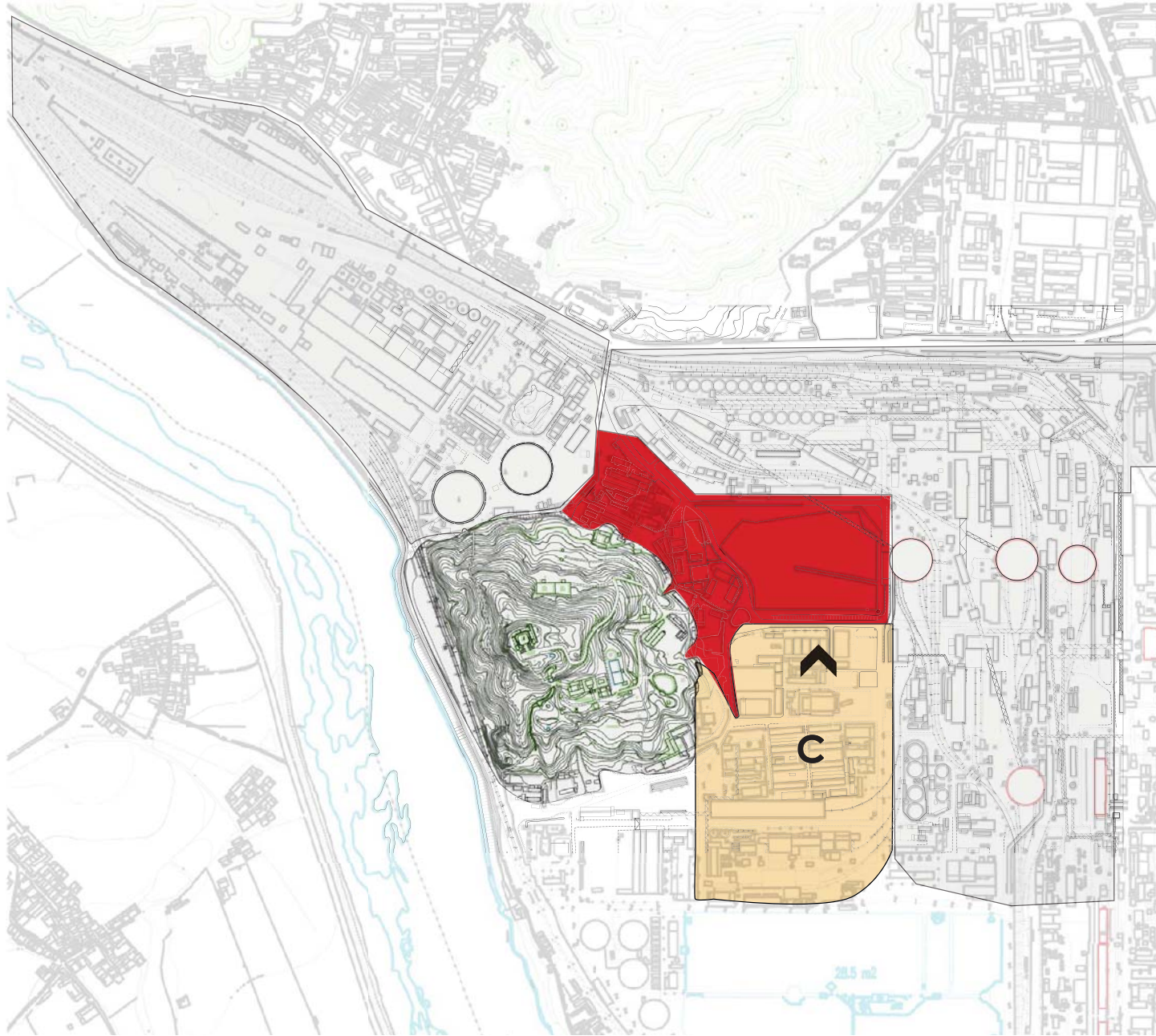


## Neighborhood Scale Adjacencies

### Industrial Zone







## Neighborhood Scale Adjacencies

### Administrative Zone

**Zone C**  
Center of the workers community  
Administrative uses  
Mid-scale buildings  
Residential area to the south