

Sixteenth Century Vocal and Instrumental Music

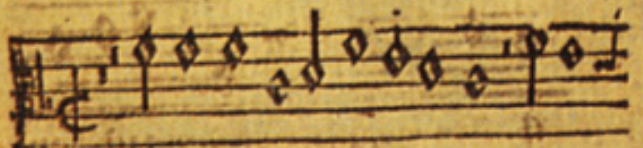
Martin Luther



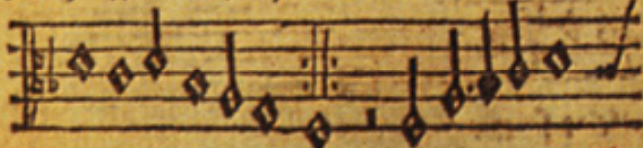
Luther's edition of Psalms

Der xlvj. Psalm / Deus
noster refugium et
virtus / &c.

Martinus Luther.

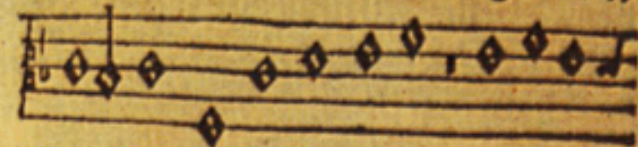


Ein feste burg ist vns Gott Ein gut
Er hilfft vns frey aus aller not / die vns

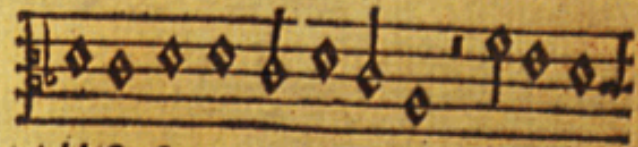


te wehr vnd waffen / Der alt bö,
ist hat be troffen / se feind /

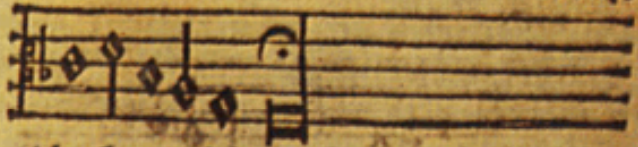
50. 49.



se feind / mit ernst ers jzt meint / gros
(macht vnd



viel list / sein grausam rüstung ist / auß
erd ist



nicht seins gleichen.
Mit vns macht ist nichts gethan /
wie sind gar bald verloren / Es streit
für vns der rechte man / den Gott hat
selbs

¶ ij

SACERDOTALE

Ad consuetudinem S. Romanæ Ecclesiæ aliarumq;
ecclesiarum ex Apostolicæ bibliothecæ ac Sanctorum
Patrum iurium sanctionibus, & ecclesiastico-
rum doctorum scriptis, ad optatum quo-
rumcunque sacerdotum commo-
dum, & utilem:

ATQVE SUMMORUM PONTIFICVM
authoritate multâ et approbatum:

**Summa nuper cura iuxta S. TRIDENTINI Concilij
Sanctiones emendatum, & auctum:**

*In quo omnium sacramentorum officia, resolutionesq; omnium dubiorum ad ea
pertinentium, excommunicationum Canones, cum breui illarum & abso-
luta declaratione ex sacris Doctoribus collecta, continentur.*

*Quibus etiam Rubricæ generales tum Missalis tum Breviarij Noui, mul-
tasq; alia sacerdotibus valde utilia ac necessaria, sunt addita: quæ
in alijs hætenus impressis desiderabantur.*



Venetiis apud Guerræos fratres, & socios.
M D LXXVI.

ciari gebennalibus flammis, quē filij tui dñi nostri Jesu Chri-
sti precioso sanguine redemisti. Qui tecum ⁊ cum spiritu sancto
viuit ⁊ regnat deus, Per omnia secula seculorum. *R.* Amen.
V. Dñs vo. *R.* Et cum spiritu tuo. *Et idem Sacerdos dicat.*
Anima eius, ⁊ animę omnium fidelium defunctorum per mise-
ricordiam Dei, *Et cantores immediate subiungant.*



Re qui e scant in pa ce.

*Et circun-
stantes cle-
rici respon-
deant.*



Amen.

Et tunc statim cantores incipiant R. Memento mei deus. fo.
148. Dum predictum R. cantatur, reuertantur in ecclesiaz. Et
postquam reuertuntur in ecclesiaz, sicut ordinate in choro. Et finito glo-
sacerdos dicat alta voce Pater noster. V. Et ne nos indu. R.
Stu libera. V. A porta inferi. R. Erue dñe aiam eius. V. Re
qui scatur in pace. R. Amen. V. Domine exau. R. Et clam. V.
Dominus vo. R. Et cum spiritu tuo. Oremus.

III ibi

Giovanni Palestrina



Interior, St. Peter's
Basilica (The Vatican)

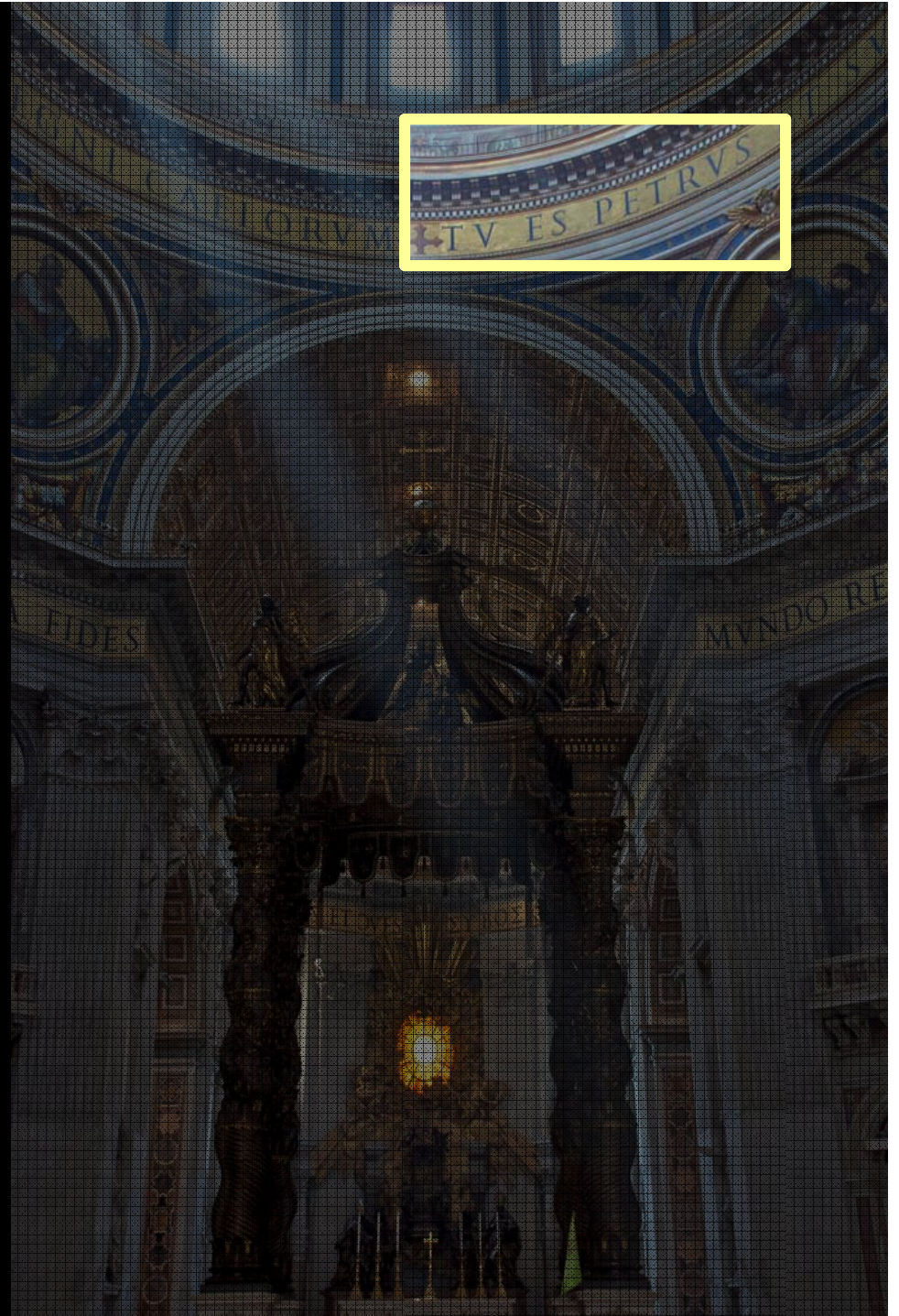


Photo by [erikki](#) on Flickr.

Opening of Motet and Mass compared

The image compares the opening of a Motet and a Mass. On the left, the Motet score features three vocal parts (Soprano, Alto, Tenor) with the lyrics "Tu es Petrus, et super hanc". A yellow box highlights the Soprano's first note, and a grey box highlights the Tenor's first note. On the right, the Mass score shows vocal parts with the lyrics "Kyrie eleison". A yellow box highlights the Soprano's first note, and a grey box highlights the Tenor's first note. Colored arrows indicate connections: a yellow arrow from the Motet Soprano box to the Mass Soprano box, a purple arrow from the Motet Alto box to the Mass Soprano box, and a green arrow from the Motet Tenor box to the Mass Tenor box.

Motet Side:

Soprano: Tu es Petrus, et super hanc

Alto: Tu es Petrus, et super hanc

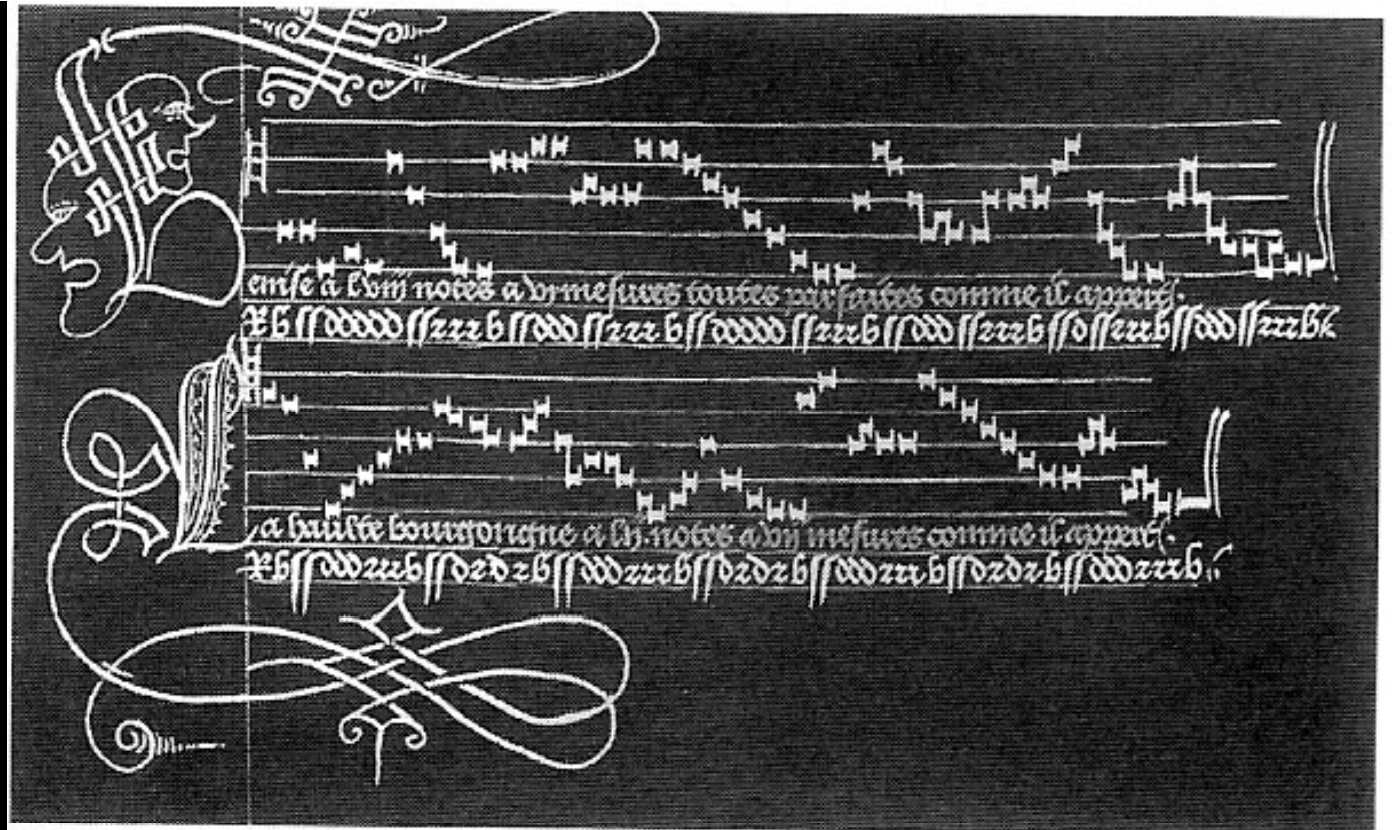
Tenor: Tu es Petrus, et super hanc

Mass Side:

Soprano: Kyrie eleison

Tenor: Kyrie eleison

Basse Dances



Basse Danses

Sanctus a plin notes a di mesures toutes imparfaites
r b s s d d r r b s s d r d r b s s d d r r b s s d r d r b s s

Sanctus a plin notes a di mesures toutes imparfaites
r b s s d d r r b s s d r r b s s d r d r b s s d r r b s s

MIT OpenCourseWare
<http://ocw.mit.edu>

21M.220 Early Music
Fall 2010

For information about citing these materials or our Terms of Use, visit: <http://ocw.mit.edu/terms>.