

6.002 Demo# 07 ( Load Set up Demo#07PG.set)

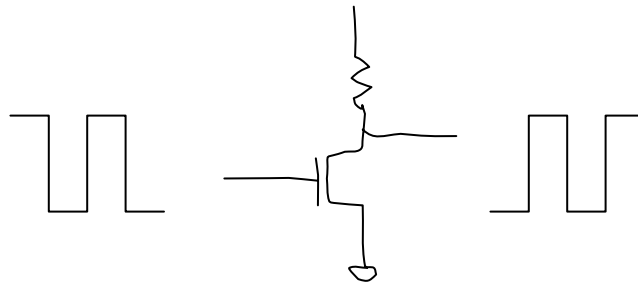
**MOS Inverter**

**Agarwal Fall 00**

**Lecture 6**

Purpose: This demo displays the input and output of a MOSFET inverter, with a square wave input and the corresponding output.

Steps: Simply display the input (square wave) and corresponding inverted output on the scope.



**Description: MOS Inverter**

To show MOS Inverter input and output waveform

Note: For more detail see circuit schematic on the next page; Fig 1

Note : Set switch on Music position!

**Oscilloscope Setup**

CH	V/DIV	OFFSET	MODE	FUNC	MATH	VERTICAL	HORIZONTAL
1 on	2	6.0 V	DC	off			
2 off				off			
3 off			DC	off			
4 on	2	-1.0 V	DC	off			
Horizontal: 500 μ		Acquisition: AUTO			AUTO 4	Trigger: CH4	

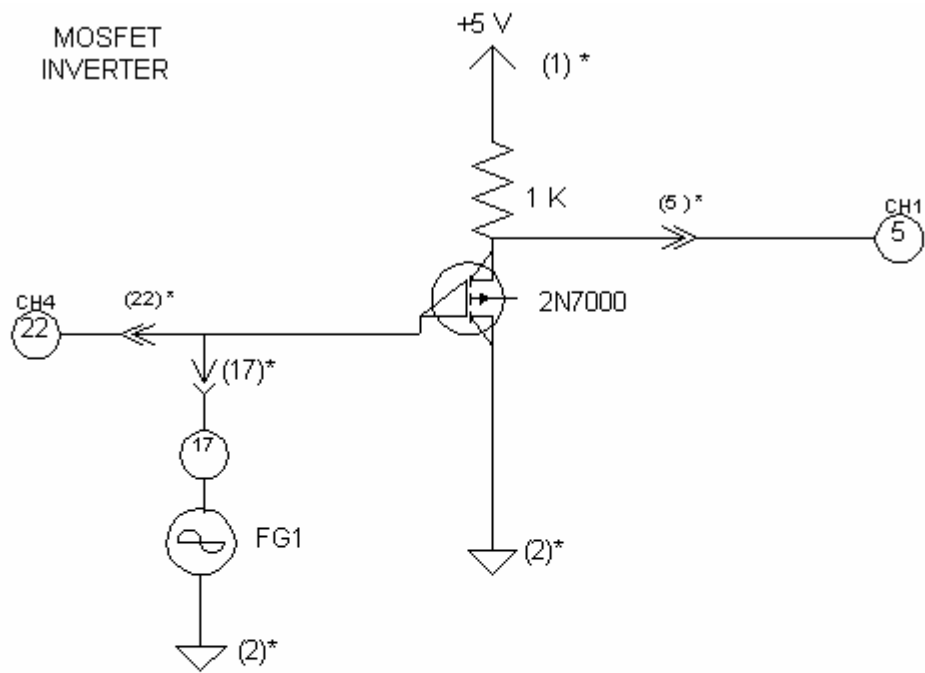
**Waveform Generator Setup**

**Power Supply Setup**

UNIT	WAVE	AMP	OFFSET	FREQ	+6	+25	-25	OUTPUT
FG1	SQ	5 v	0	1 KHZ	0	5		on
Trigger:								INT

Note: Set FG1 @ High Z !!!

Cite as: Anant Agarwal and Jeffrey Lang, course materials for 6.002 Circuits and Electronics, Spring 2007. MIT OpenCourseWare (<http://ocw.mit.edu/>), Massachusetts Institute of Technology. Downloaded on [DD Month YYYY].



\* Note: # of pins  
on the PC  
board and BNC  
connectors

○ BNC  
( ) Pins

