



File->Import to embed preexisting raster/vector graphics



point select tool. lets you see the points that make up the vector object

select and click to zoom. shift click to zoom out

Draw a box vector object

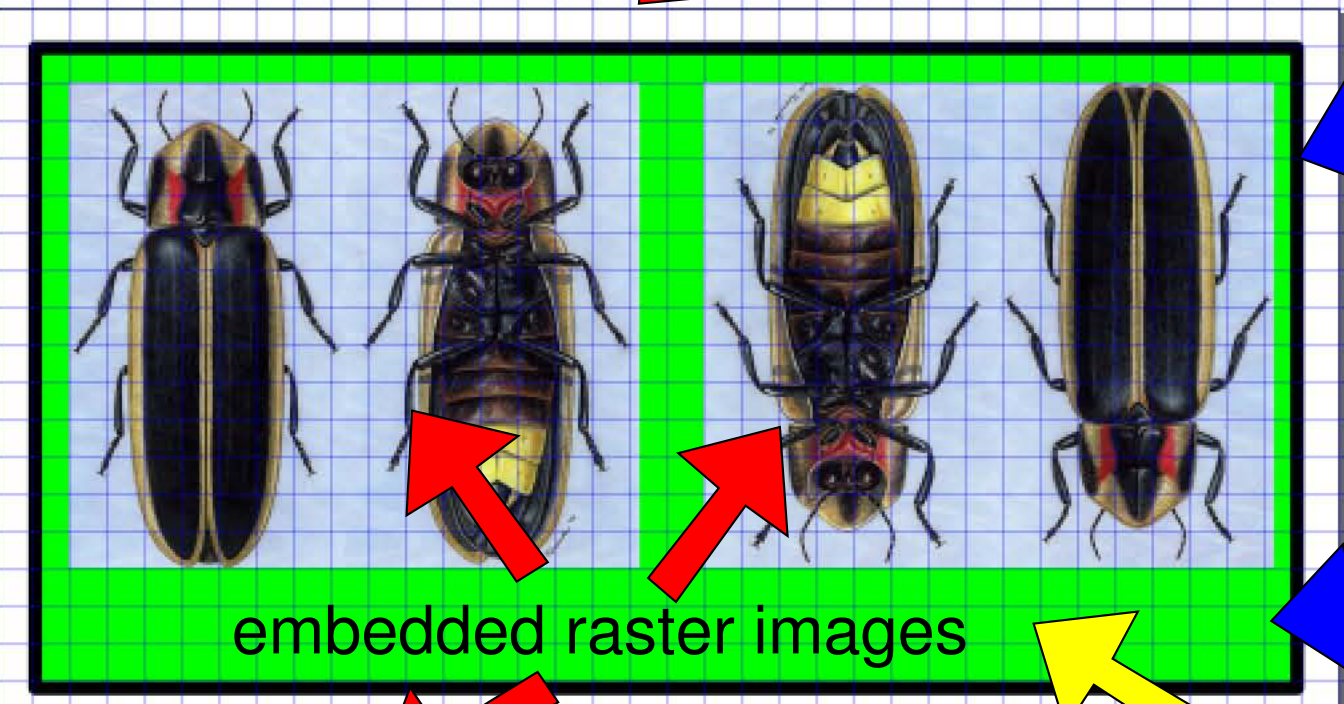
Draw a line vector object. Return to the original point to make a polygon that can be filled with a color (or with nothing)

advanced fill/stroke parameters

Select the "fill" color for the currently selected object

this box represents the "page". Resizable through File->Document properties

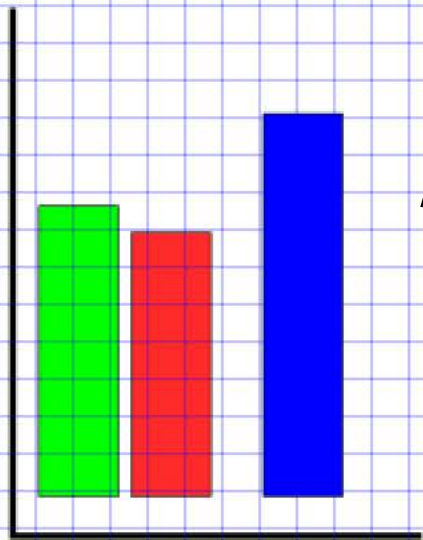
these things are the grid snapping parameters. File->Document properties->Grids to turn grids on



embedded raster images

black outside line is an example of the "stroke" of an object. Thickness, color, opacity, style can be changed

green inside color is an example of the "fill" of an object. Color, opacity, can be changed.



These are vector boxes

objects within a single layer can be rearranged by going to Object->Raise to top / Lower to bottom

objects can be moved to different layers by Layer-> Move selection to Layer above /below

This is a vector line with a black 5pixel wide stroke



MIT OpenCourseWare
<http://ocw.mit.edu>

7.15 Experimental Molecular Genetics
Spring 2015

For information about citing these materials or our Terms of Use, visit: <http://ocw.mit.edu/terms>.