

Materials with Biological Recognition (continued)

TODAY: Using materials to mimic cell-cell contacts
start new section: inorganic biomaterials

READING:

ANNOUNCEMENTS:

Changes in signaling achieved by cytokine immobilization on surfaces

Image and figure text removed due to copyright reasons.

Please see: Figure 1 in Ito, Y. "Tissue Engineering by Immobilized Growth Factors." *Materials Science and Engineering C6* (1998): 267-274.

Surface immobilization can induce new function in cytokines: case of tethered EGF-triggered neuronal cell differentiation

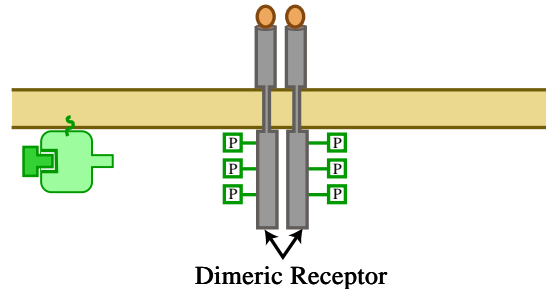


Figure by MIT OCW.

PC12 cell line:

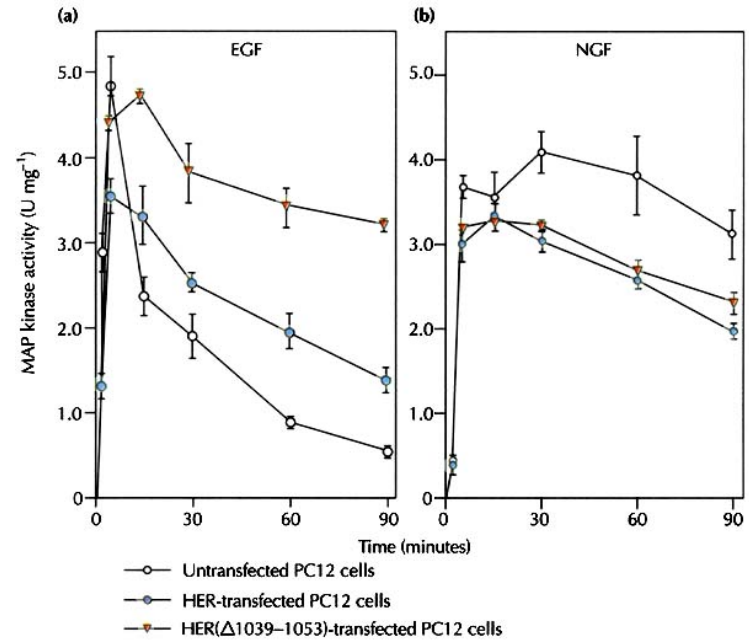
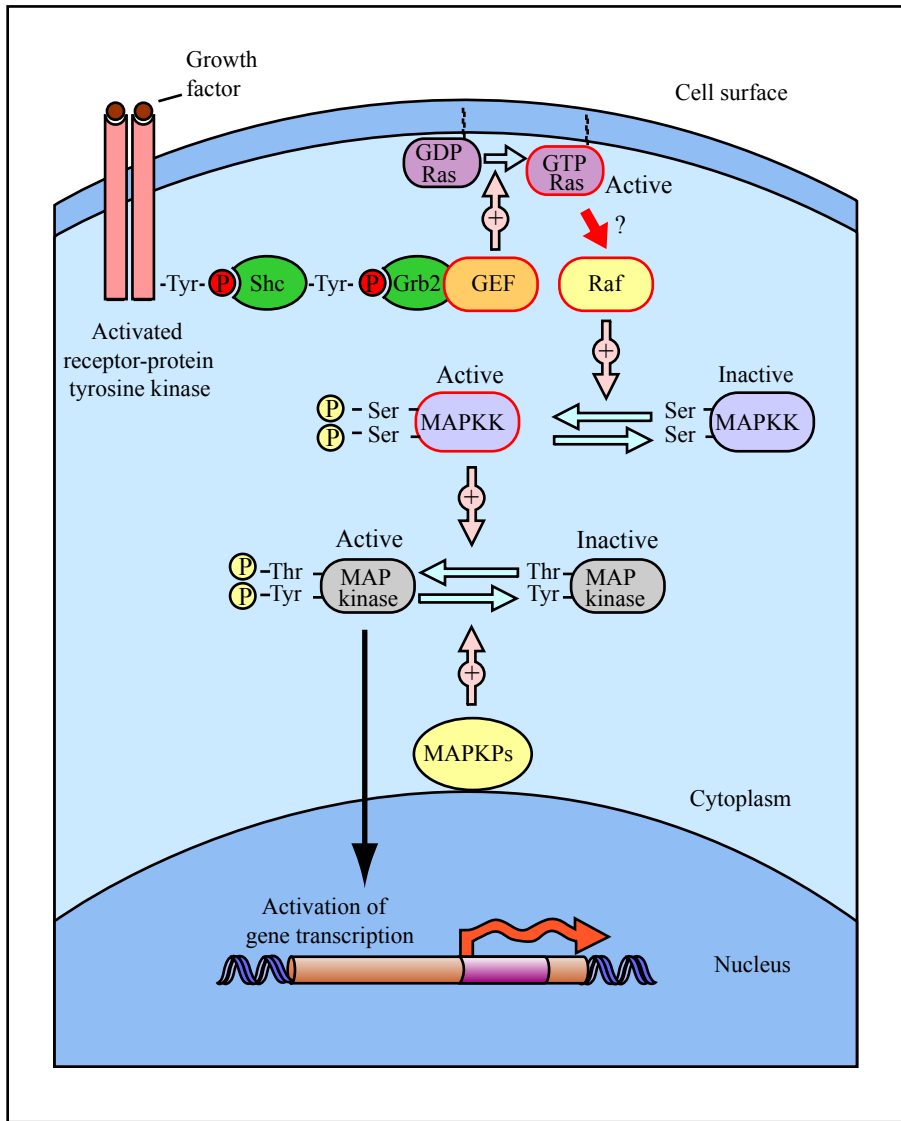
- induced to differentiate and extend axons under stimulation of **NGF** (nerve growth factor)

Signal doesn't trigger internalization of receptor; thus signal lasts longer and triggers differentiation

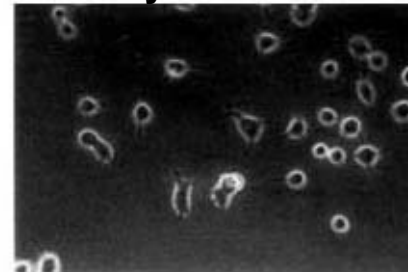
- induced to proliferate by **EGF**

Signal triggers internalization of receptor; short signal triggers proliferation

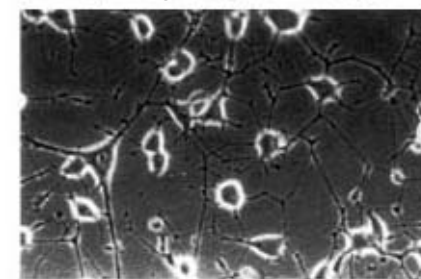
NGF vs. EGF signaling in PC12 neuronal cells



Day 3 EGF

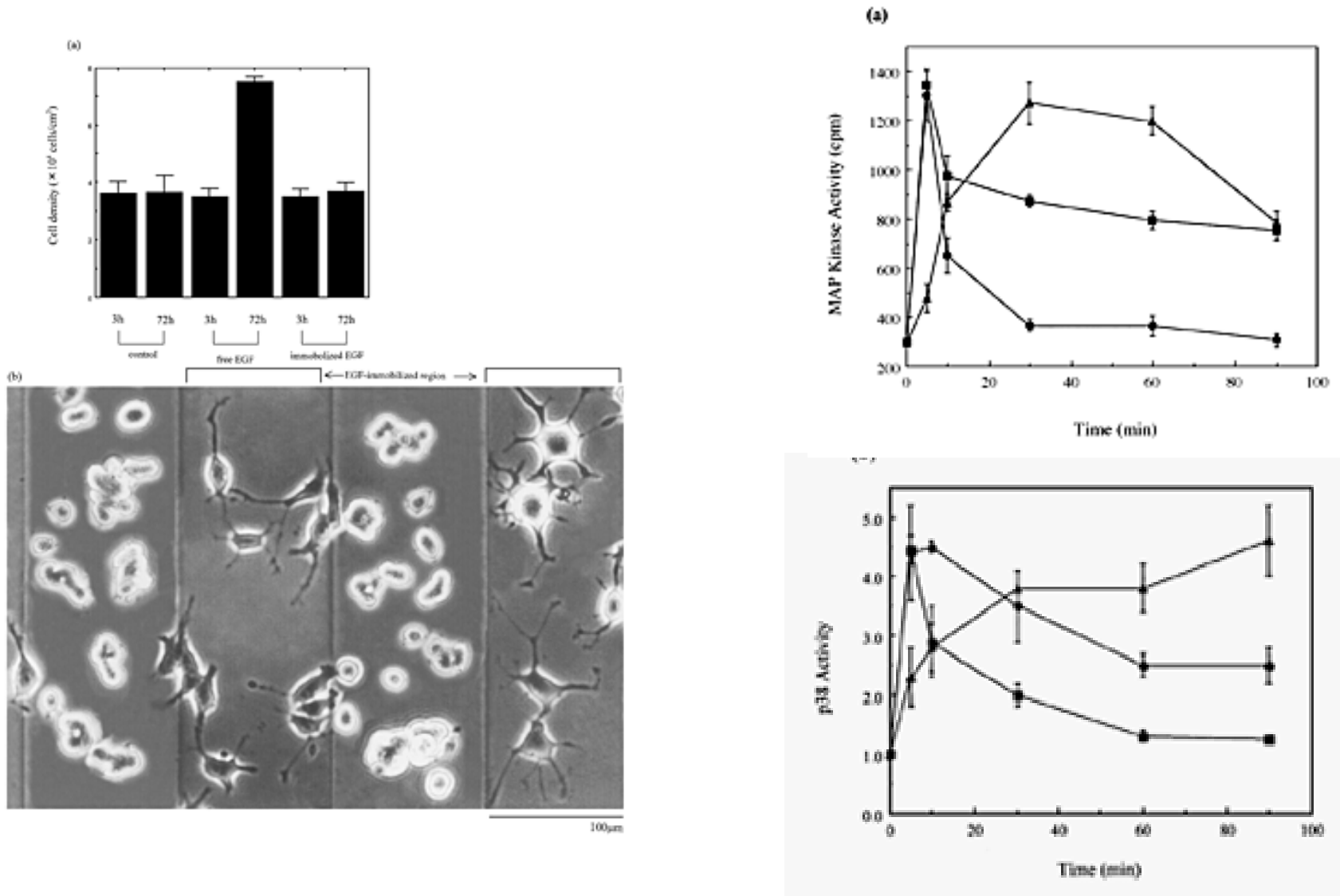


Day 3 NGF



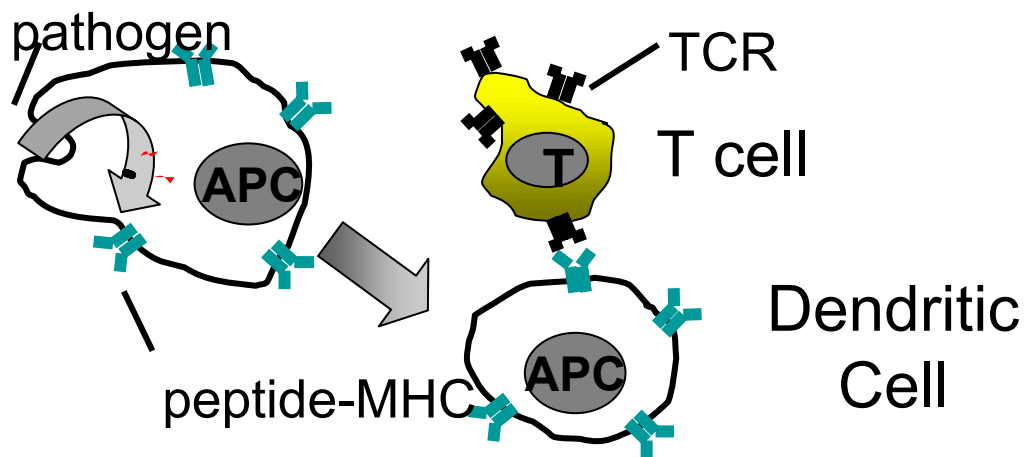
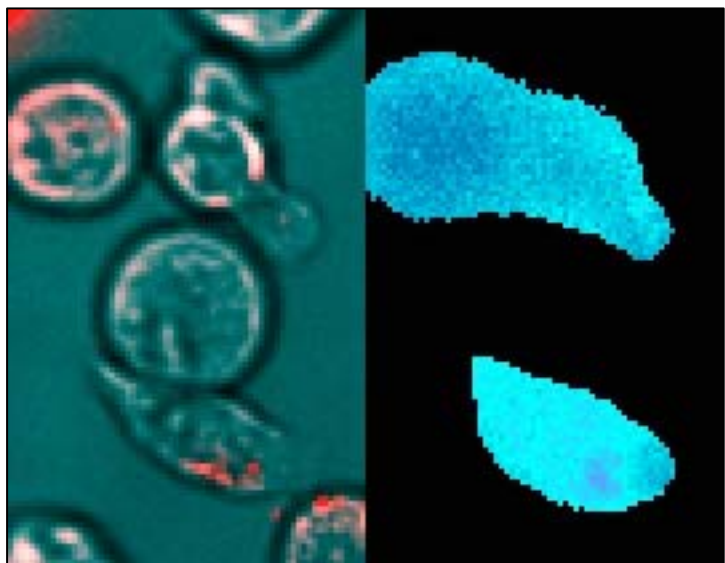
(Traverse et al. 1994)

Changing the biological activity of cytokines by surface immobilization:



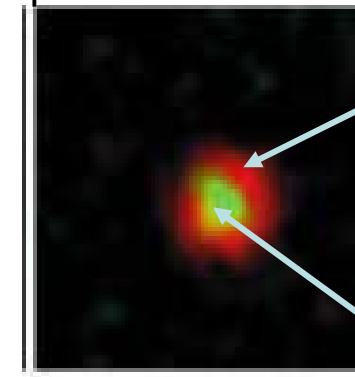
Materials that mimic cell-cell contacts

Physiology of the immune response: cellular level



Immunological synapse (IS)

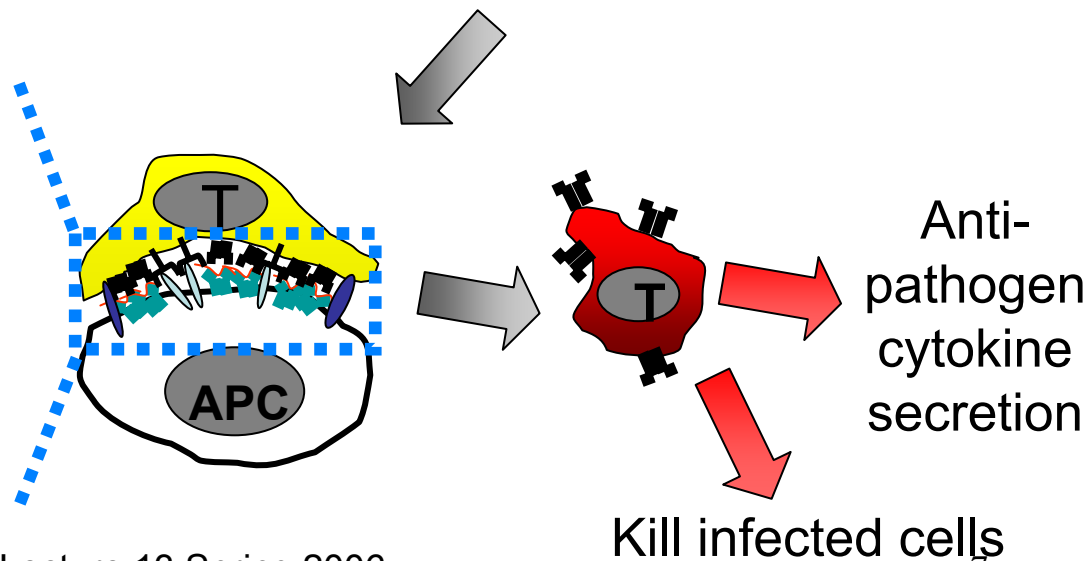
'Supramolecular activation clusters'



10 μm

pSMAC

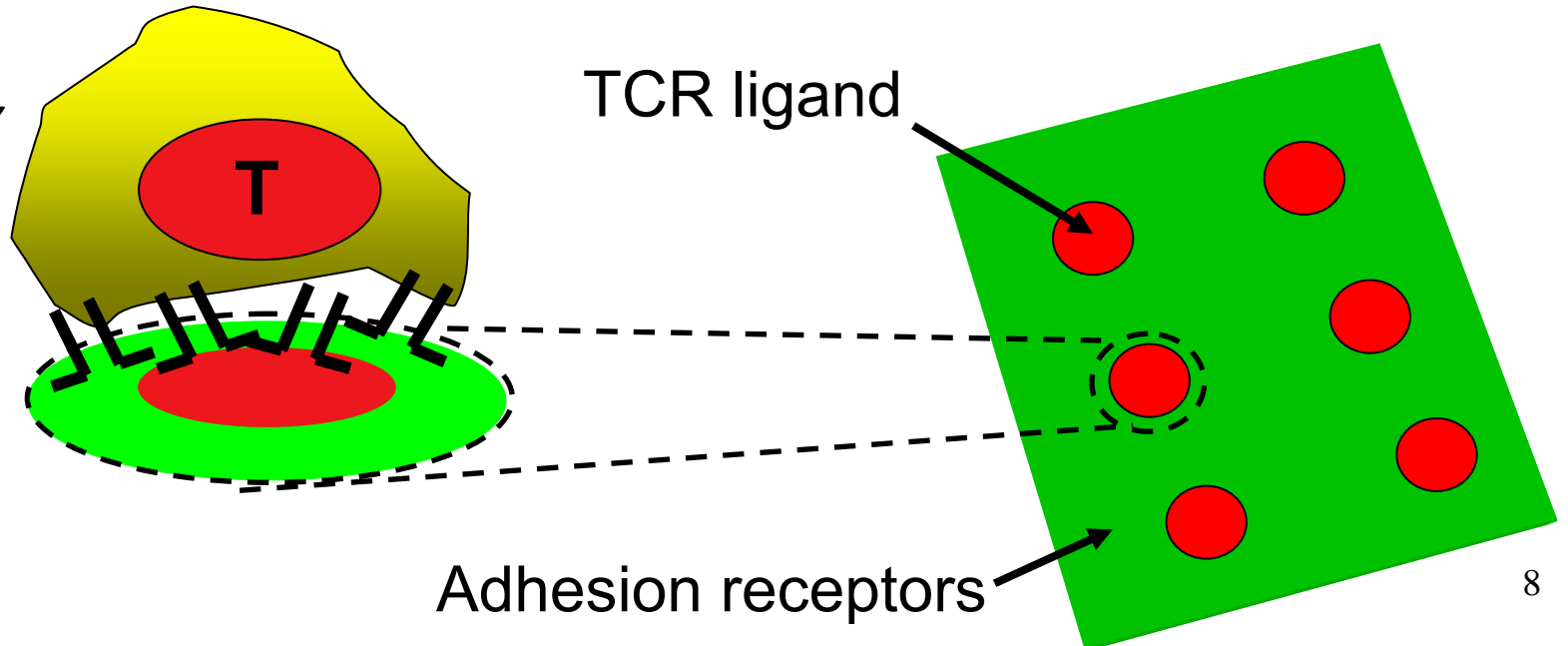
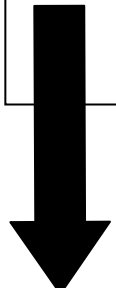
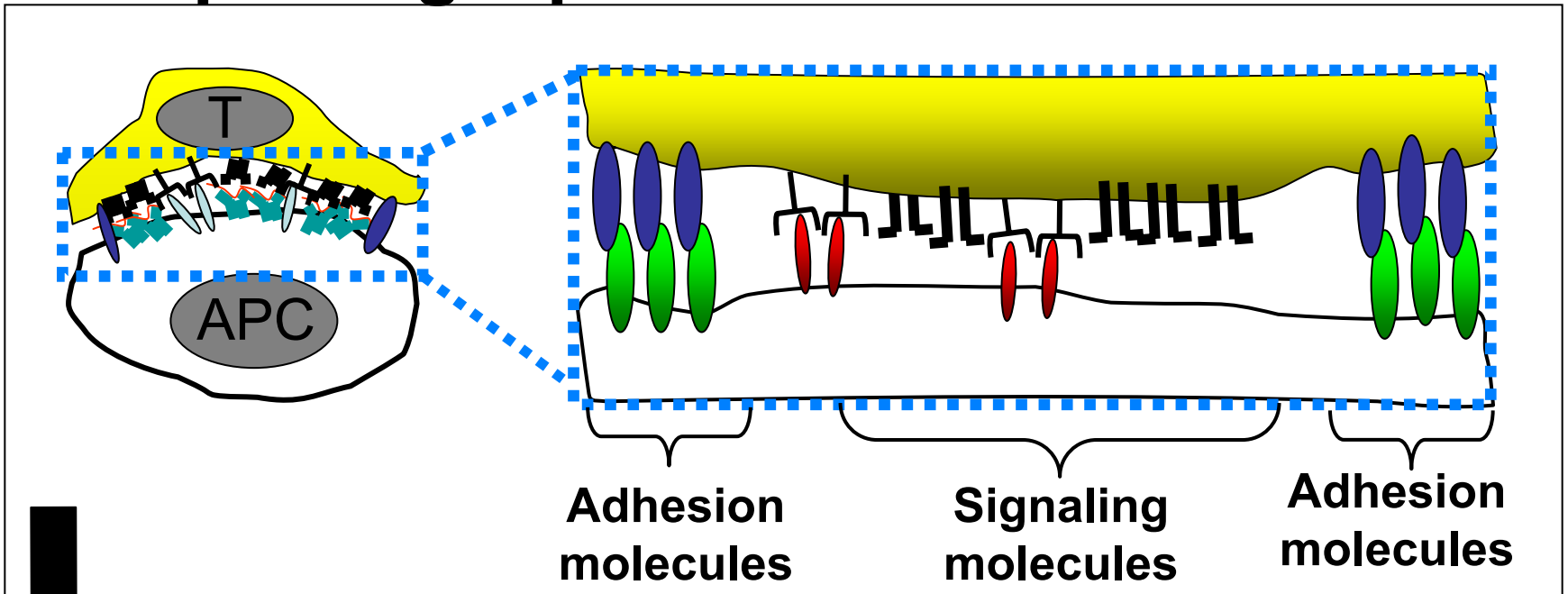
cSMAC



Anti-pathogen
cytokine
secretion

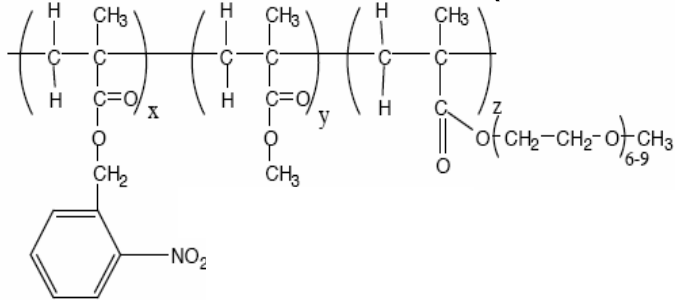
Kill infected cells

Replacing a partner cell with a surface:

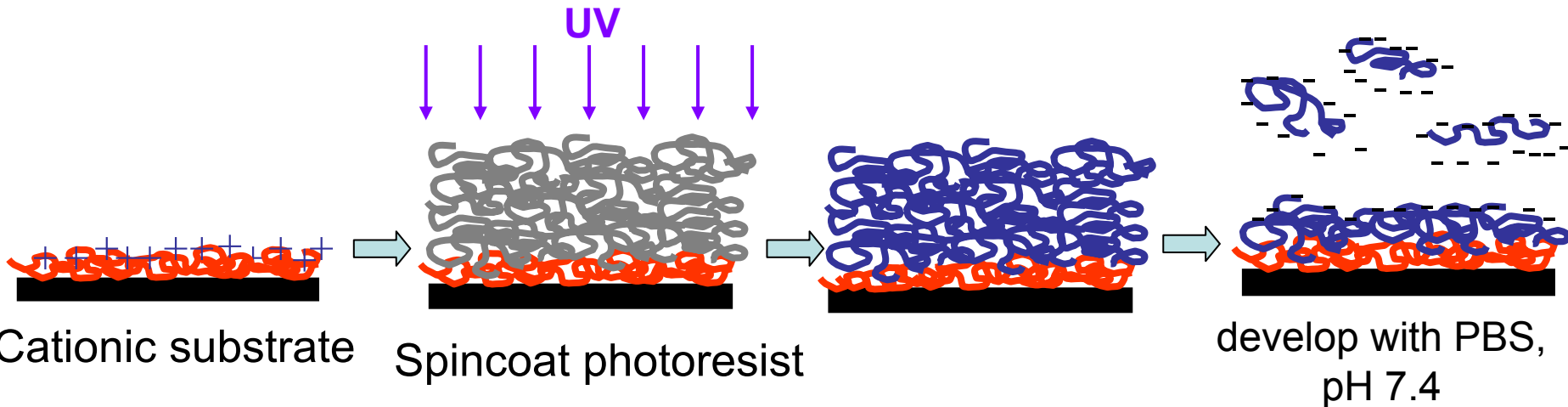
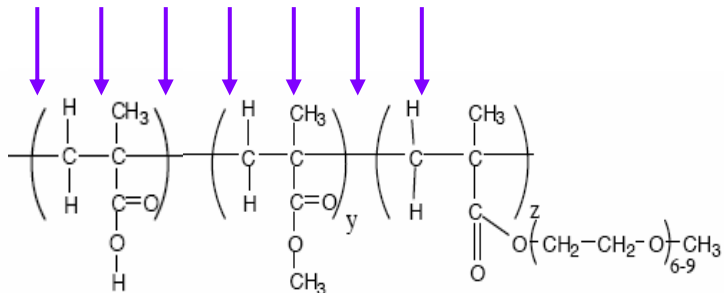


PNMP photoresist

40 : 40 : 20 (wt:wt:wt)



UV



Methylene blue staining of patterned surface:

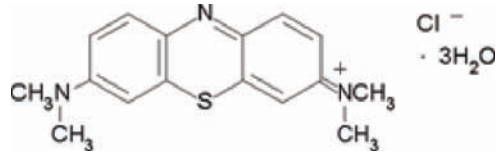
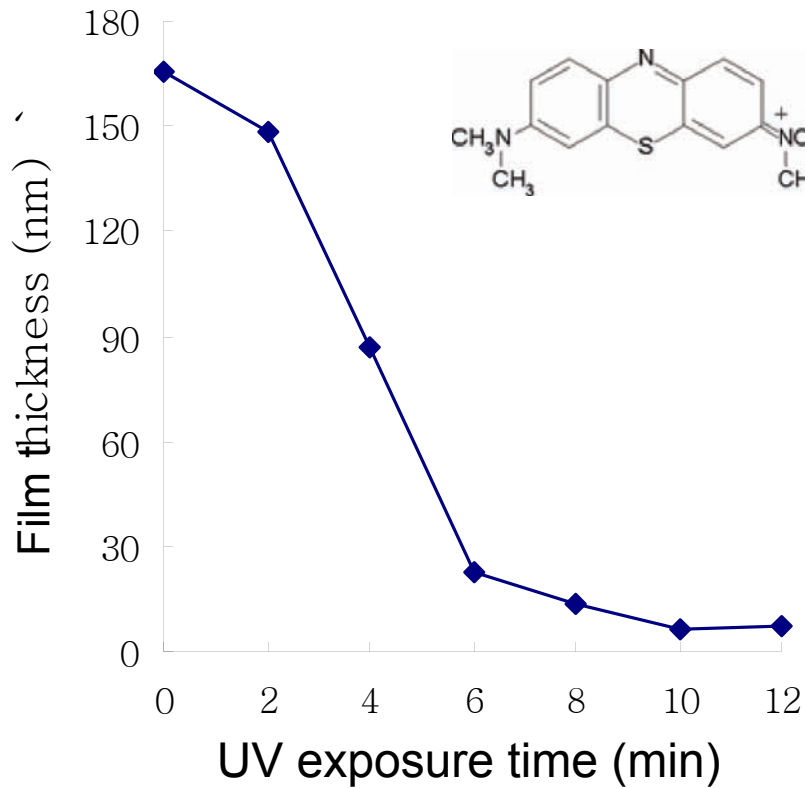
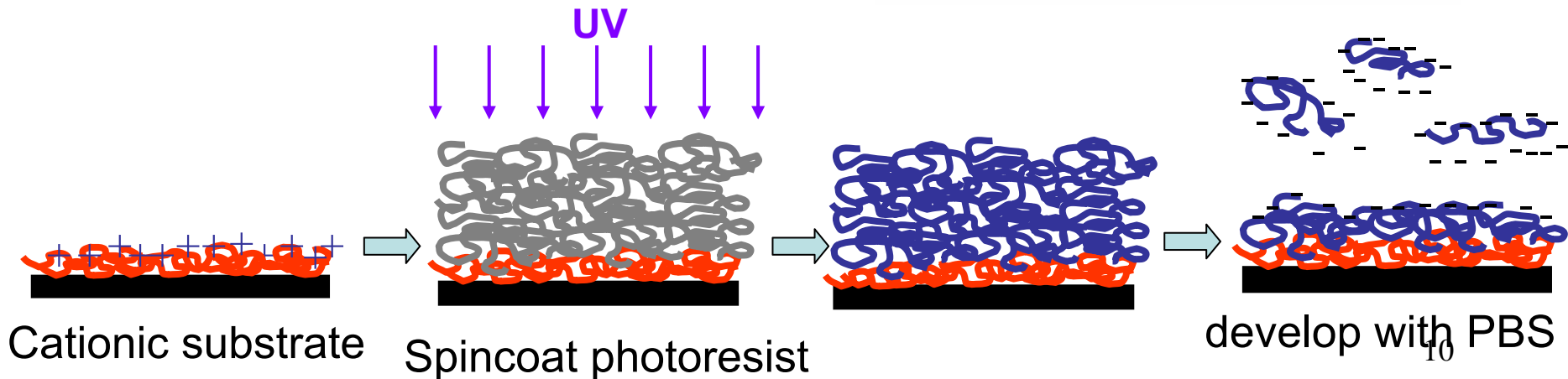
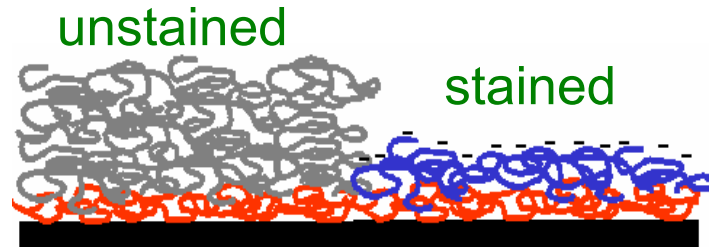
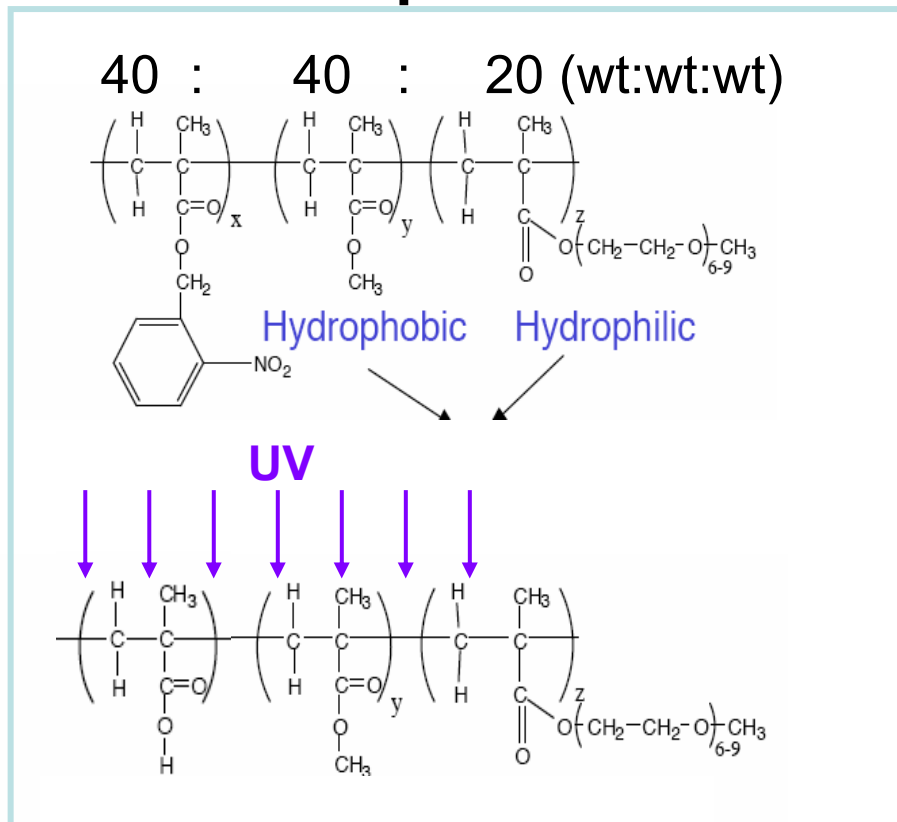


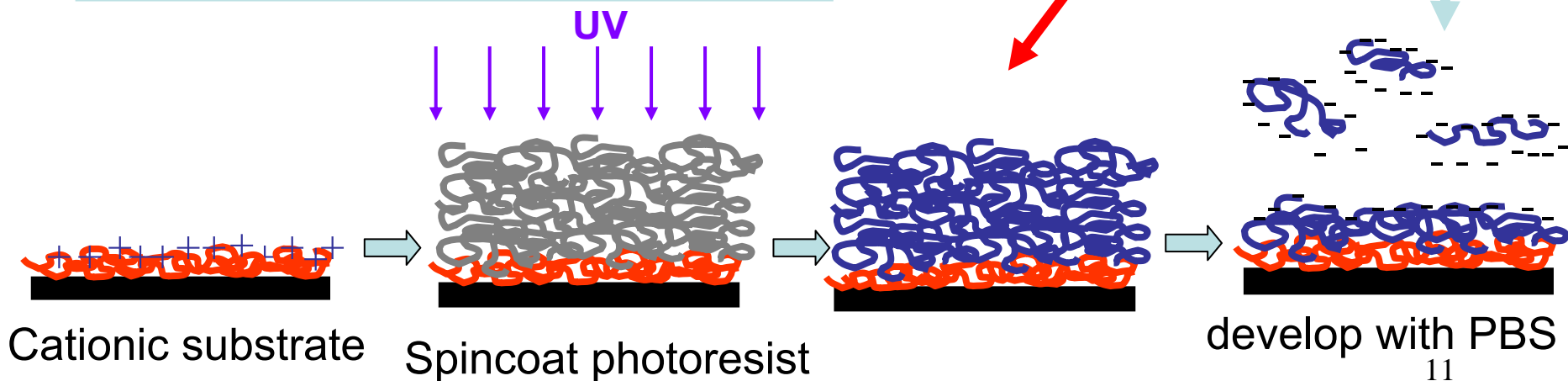
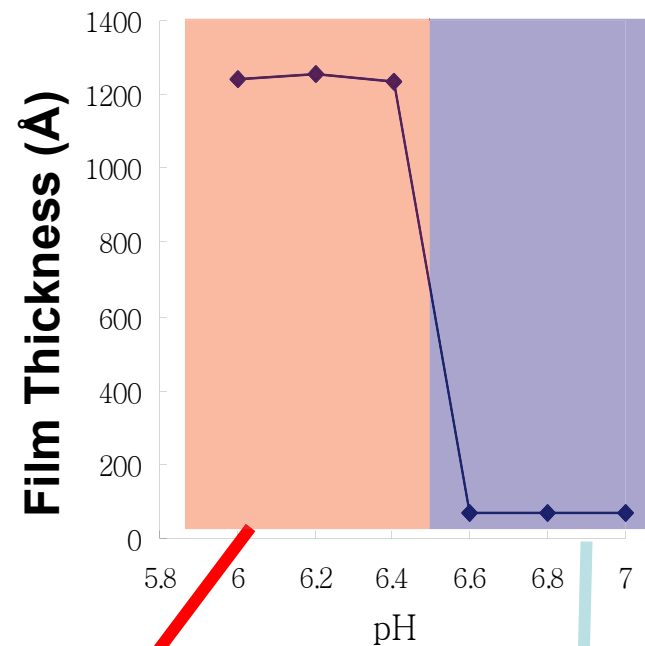
Image removed due to copyright reasons.
 Please see: Doh, J., and D. J. Irvine. *Journal of the American Chemical Society* 126, no. 30 (2004): 9170-9171.



PNMP photoresist



pH-dependent solubility
of UV exposed photoresist:

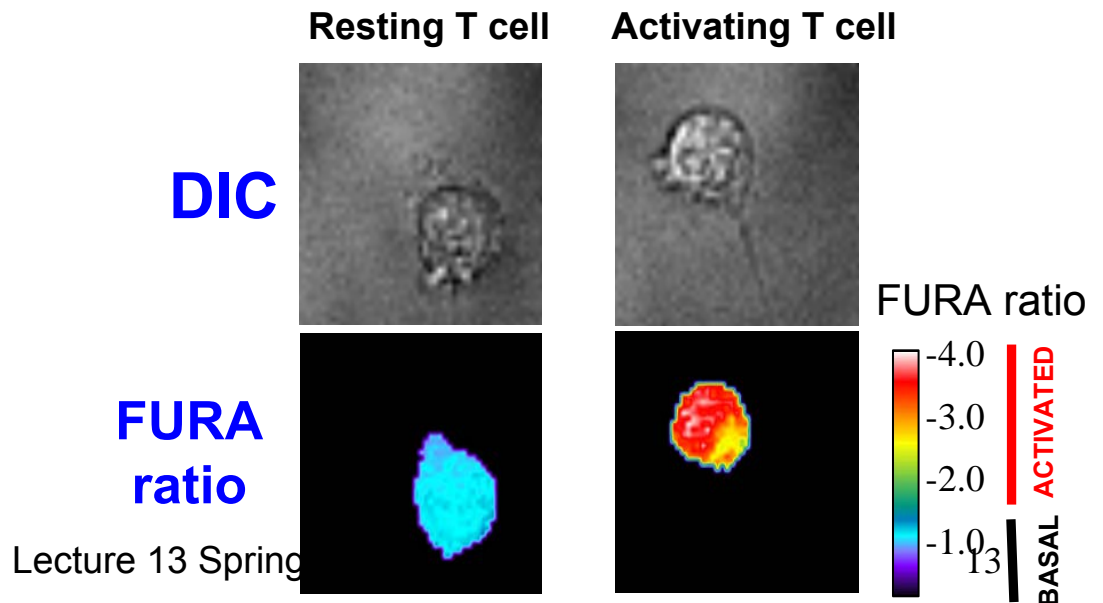


Images removed due to copyright reasons.
Please see: Doh, J., and D. J. Irvine. *PNAS* 103, no. 15 (2006): 5700-5705.

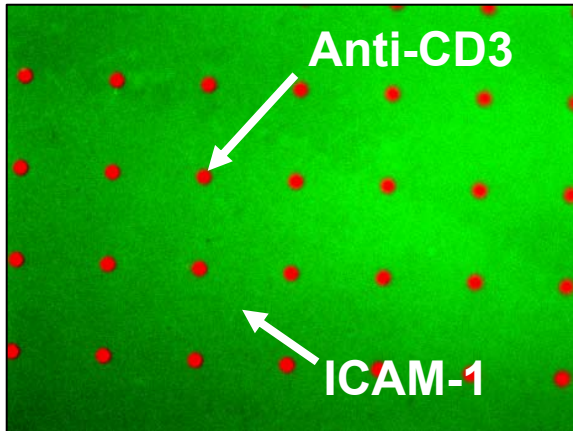
In situ tracking of T Cell Receptor triggering

Image removed due to copyright reasons.
Please see: Molecular probes Web site -
<http://probes.invitrogen.com/>

Image removed due to copyright reasons.
Please see: Abraham, and Weiss. *Nat Rev Immunol* 4 (2004): 301-308.



T cell migration on surfaces modulated by activation signals



Images removed due to copyright reasons.
Please see: Doh, J., and D. J. Irvine. *PNAS* 103, no. 15 (2006): 5700-5705.

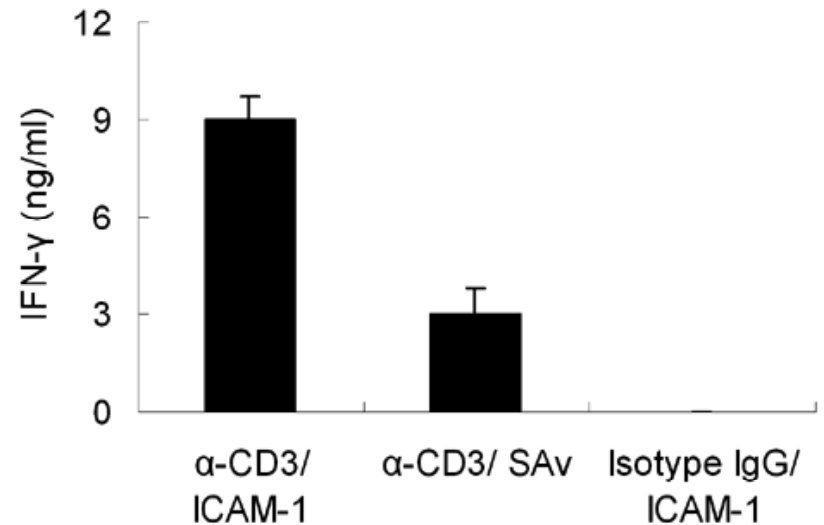
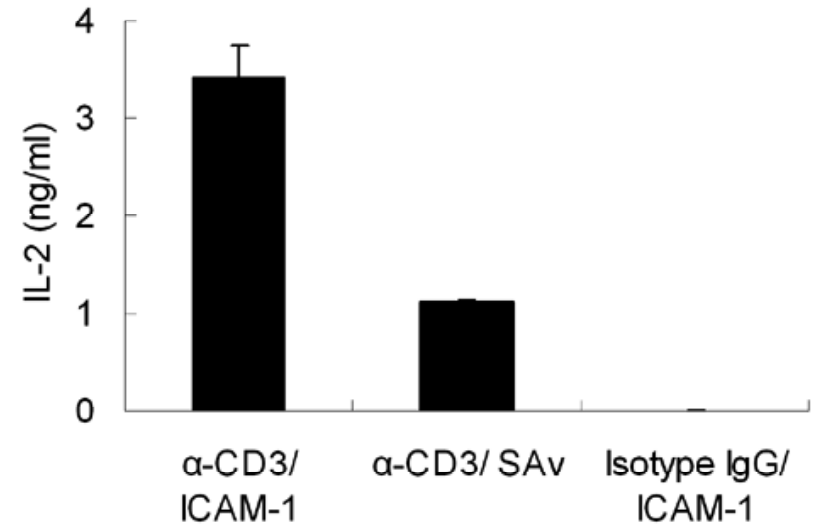
T cells self-organize in response to synapse arrays

Graph and images removed due to copyright reasons.

Please see: Doh, J., and D. J. Irvine. *PNAS* 103, no. 15 (2006): 5700-5705.

Do surface-patterned ligands lead to full T cell activation?

Image removed due to copyright reasons.
Please see: Doh, J., and D. J. Irvine. *PNAS* 103, no. 15 (2006): 5700-5705.



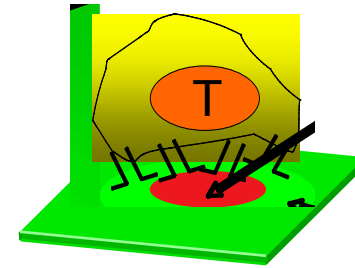
T cells assemble immunological synapses on 'synapse array' surfaces

Images removed due to copyright reasons.

Please see: Doh, J., and D. J. Irvine. *PNAS* 103, no. 15 (2006): 5700-5705.

T cells centrally cluster TCRs and signaling molecules, with a peripheral ring of cytoskeletal components.

Using protein micropatterned surfaces to direct immune cells:



TCR ligands

Adhesion ligands

Images removed due to copyright reasons.

Please see: Doh, J., and D. J. Irvine. *PNAS* 103, no. 15 (2006): 5700-5705.

Images removed due to copyright reasons.

Please see: Doh, J., and D. J. Irvine. *PNAS* 103, no. 15 (2006): 5700-5705.

Imparting mobility: patterned supported lipid bilayers



Imparting mobility: patterned supported lipid bilayers

Image removed due to copyright restrictions.

Please see: Figure 1 in Mossman, et al. *Science* 310 (2005): 1191-1193.

Image removed due to copyright restrictions.

Please see: Figure 1 in Wu, et al. *PNAS* 101 (2004): 13798-13803.

Inorganic biomaterials

Last time:	enzymatic recognition of biomaterials Cytokine signaling from biomaterials
Today:	introduction to biomineralization and biomimetic inorganic/organic composites Interfacial biomineralization
Reading:	Stephen Mann, 'Biomineralization: Principles and Concepts in Bioinorganic Materials Chemistry,' Ch. 3 pp. 24-37, Oxford Univ. Press (2001)
Supplementary Reading:	-

ANNOUNCEMENTS:

Inorganic building blocks used by nature

Images removed due to copyright reasons.

Please see: <http://ruby.colorado.edu/~smyth/min/minerals.html>

Inorganic building blocks used by nature

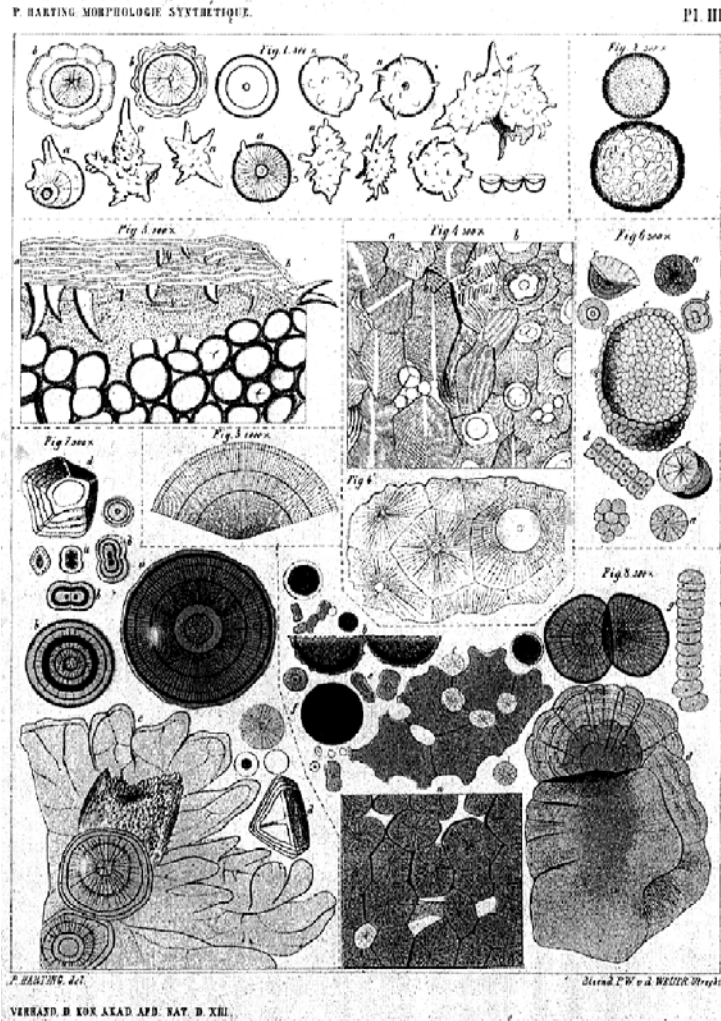
Image removed due to copyright restrictions.
Please see: Mann, S. "Biomineralization: Principles and Concepts
in Bioinorganic Materials Chemistry." *Oxford University Press*, 2001.

Inorganic building blocks used by nature

Table removed due to copyright restrictions.

Please see: Table 2.2 in Mann, S. "Biomineralization: Principles and Concepts in Bioinorganic Materials Chemistry." *Oxford University Press*, 2001.

Bioceramics: motivation for studying and mimicking biomineralization



Pieter Harting's original hand drawings of calcareous microstructures (1872)

Bioceramics: motivation for studying and mimicking biomineralization

Complex macro- and microstructures of biological inorganic materials

Images of radiolarian, coccolith, and *A. hexacona* removed due to copyright restrictions.

Complex macro- and microstructures of biological inorganic materials

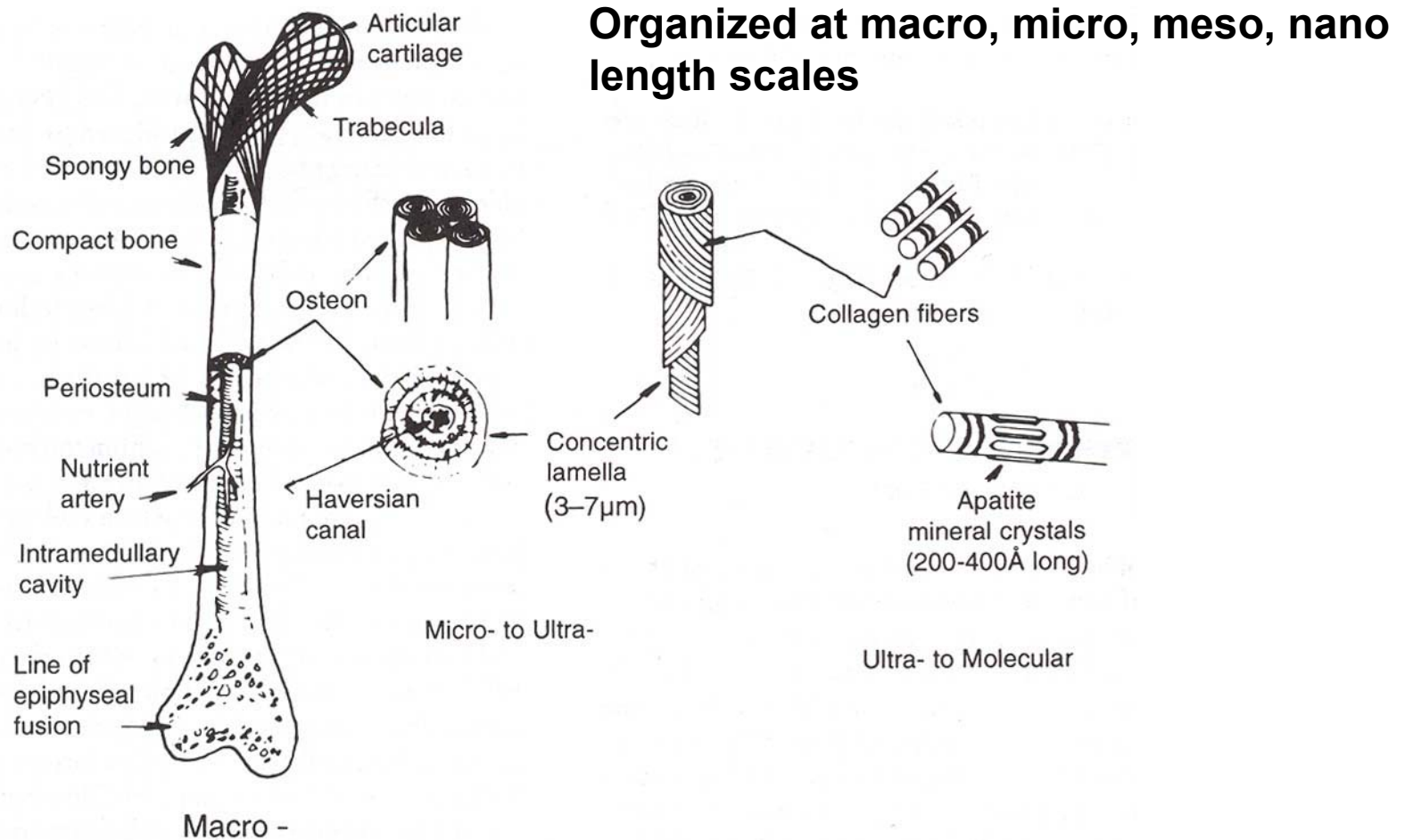


FIG. 1. Hierarchical levels of structural organization in a human long femur. (Adapted with permission from J. B. Park, *Biomaterials: An Introduction*, Plenum Publ., 1979, p. 105.)

Paradigms in biomineralization

Further Reading

1. Voet & Voet. in *Biochemistry*.
2. Paredes, N., Rodriguez, G. A. & Puiggali, J. Synthesis and characterization of a family of biodegradable poly(ester amide)s derived from glycine. *Journal of Polymer Science, Part A: Polymer Chemistry* **36**, 1271-1282 (1998).
3. Fan, Y., Kobayashi, M. & Kise, H. Synthesis and biodegradability of new polyesteramides containing peptide linkages. *Polymer Journal* **32**, 817-822 (2000).
4. O, S. C. & Birkinshaw, C. Hydrolysis of poly (n-butylcyanoacrylate) nanoparticles using esterase. *Polymer Degradation and Stability* **78**, 7-15 (2002).
5. Ekblom, P. & Timpl, R. Cell-to-cell contact and extracellular matrix. A multifaceted approach emerging. *Curr Opin Cell Biol* **8**, 599-601 (1996).
6. Chapman, H. A. Plasminogen activators, integrins, and the coordinated regulation of cell adhesion and migration. *Curr Opin Cell Biol* **9**, 714-24 (1997).
7. Mann, B. K., Gobin, A. S., Tsai, A. T., Schmedlen, R. H. & West, J. L. Smooth muscle cell growth in photopolymerized hydrogels with cell adhesive and proteolytically degradable domains: synthetic ECM analogs for tissue engineering. *Biomaterials* **22**, 3045-51 (2001).
8. West, J. L. & Hubbell, J. A. Polymeric biomaterials with degradation sites for proteases involved in cell migration. *Macromolecules* **32**, 241-244 (1999).
9. Gobin, A. S. & West, J. L. Cell migration through defined, synthetic ECM analogs. *Faseb J* **16**, 751-3 (2002).
10. Sperinde, J. J. & Griffith, L. G. Control and prediction of gelation kinetics in enzymatically cross-linked poly(ethylene glycol) hydrogels. *Macromolecules* **33**, 5476-5480 (2000).
11. Sperinde, J. J. & Griffith, L. G. Synthesis and characterization of enzymatically-cross-linked poly(ethylene glycol) hydrogels. *Macromolecules* **30**, 5255-5264 (1997).
12. Zhang, Z. Y., Shum, P., Yates, M., Messersmith, P. B. & Thompson, D. H. Formation of fibrinogen-based hydrogels using phototriggerable diplasmalogen liposomes. *Bioconjug Chem* **13**, 640-6 (2002).
13. Sanborn, T. J., Messersmith, P. B. & Barron, A. E. In situ crosslinking of a biomimetic peptide-PEG hydrogel via thermally triggered activation of factor XIII. *Biomaterials* **23**, 2703-10 (2002).
14. Collier, J. H. et al. Thermally and photochemically triggered self-assembly of peptide hydrogels. *J Am Chem Soc* **123**, 9463-4 (2001).
15. Collier, J. H. & Messersmith, P. B. Enzymatic modification of self-assembled peptide structures with tissue transglutaminase. *Bioconjug Chem* **14**, 748-55 (2003).
16. Schense, J. C., Bloch, J., Aebischer, P. & Hubbell, J. A. Enzymatic incorporation of bioactive peptides into fibrin matrices enhances neurite extension. *Nat Biotechnol* **18**, 415-9 (2000).
17. Ito, Y. Tissue engineering by immobilized growth factors. *Materials Science and Engineering C* **6**, 267-274 (1998).
18. Ito, Y. Regulation of cell functions by micropattern-immobilized biosignal molecules. *Nanotechnology* **9**, 200-204 (1998).
19. Kuhl, P. R. & Griffith-Cima, L. G. Tethered epidermal growth factor as a paradigm for growth factor-induced stimulation from the solid phase. *Nat Med* **2**, 1022-7 (1996).
20. Chen, G. & Ito, Y. Gradient micropattern immobilization of EGF to investigate the effect of artificial juxtacrine stimulation. *Biomaterials* **22**, 2453-7 (2001).
21. Ito, Y. Surface micropatterning to regulate cell functions. *Biomaterials* **20**, 2333-42 (1999).