

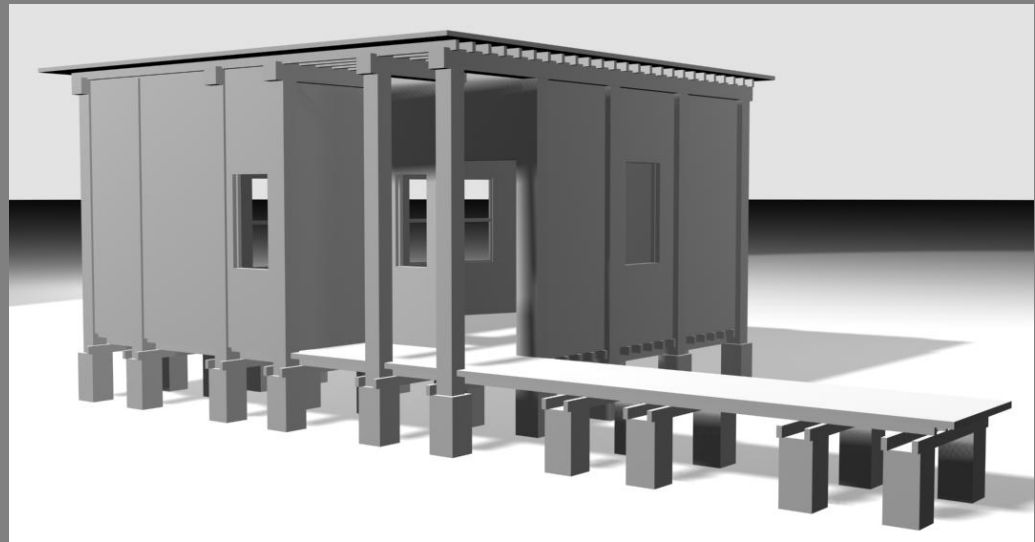
MIT OpenCourseWare
<http://ocw.mit.edu>

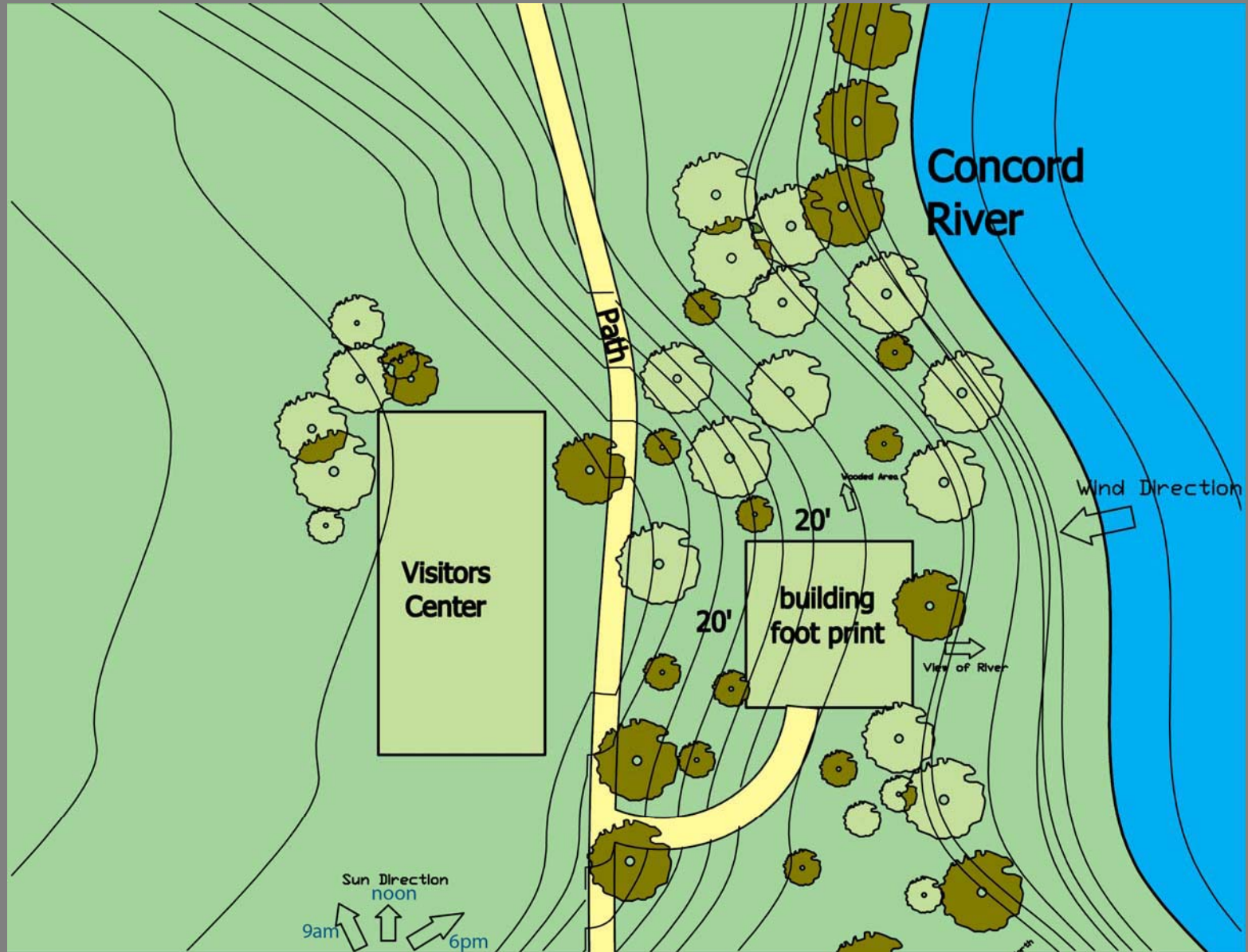
4.500 Introduction to Design Computing
Fall 2008

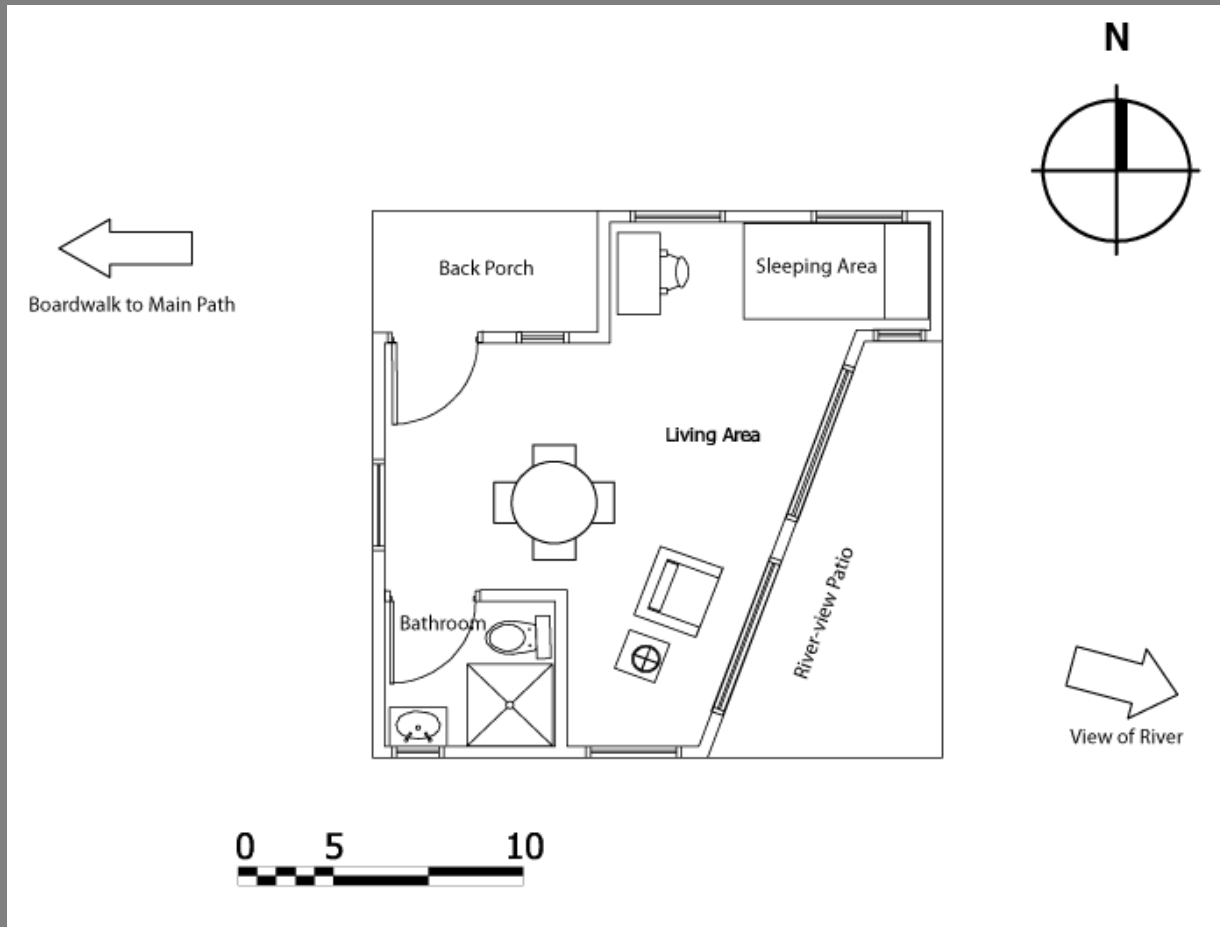
For information about citing these materials or our Terms of Use, visit: <http://ocw.mit.edu/terms>.

Lakeside Cabin

- **Maximizes space: main room opens entire house up while connecting it to the surrounding environment**
- **boardwalk from the main path**
- **large river-facing windows directly across from the front door**
- **Retains traditional and natural elements that remind tenant of the site's historical value**
- **Bedroom Nook; sleeping area also a “thinking” area that creates a small intimate space, yet doesn't take away from the open main room**
- **Porch encourages interaction with outdoors**



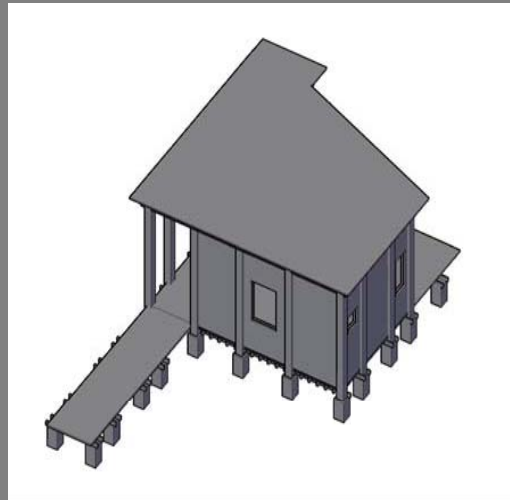
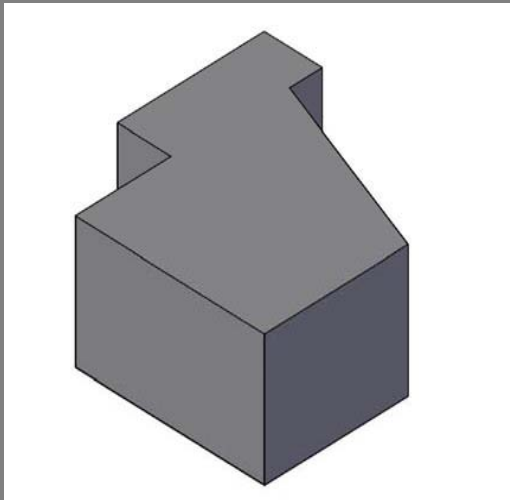


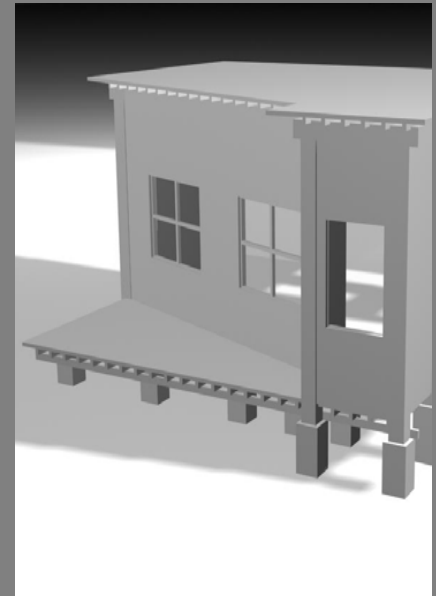
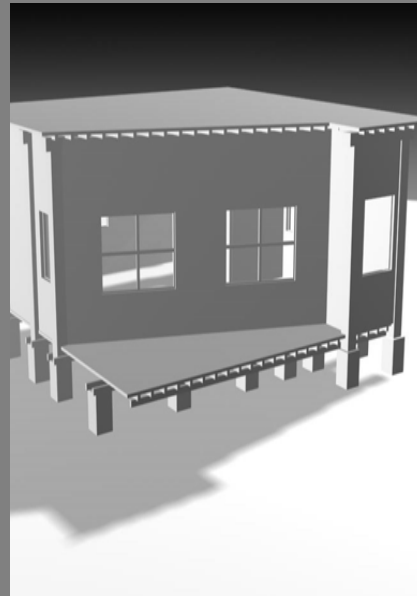
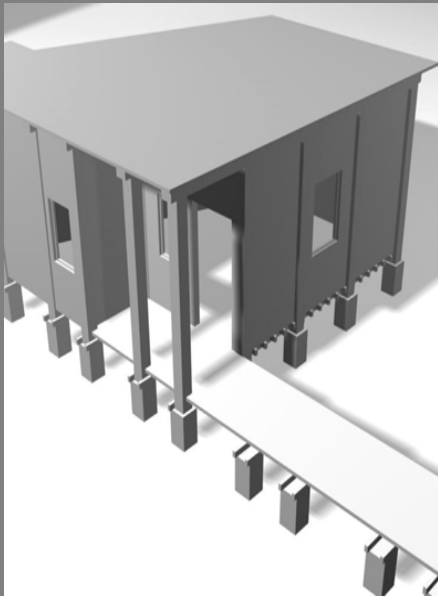


Floor Plan
patio view of river
nook for bed

Final Shape

- maximizes surface of river-facing façade
- creates specific area for sleeping and working





- boardwalk from the main path
- Visible structural beams for ornament
- Cozy and intimate sleeping nook
- large river-facing windows directly across from the front door
- Immediate view across house as you enter opens the main living room up to the surrounding nature
- Back porch for additional outdoor connection